



U.S. Department of Education
1998 Electronic Access Conferences



Session 46

What's New with Title IV WAN?



What is Title IV WAN?

The Title IV Wide Area Network (WAN) is the communication network that carries data to and from the Title IV databases.



What's New with Title IV WAN?

- Enrollment Document
- Password Authentication and Voice Processing System
- EDconn32 software and Enterprise Gateway
- What Will Be Different?
- Future of Title IV WAN



New TIV-WAN Enrollment Document

- “Enrollment to Participate in Title IV WAN”
- Combines old CID, LOA and PA into one document
- Interview format



Enrollment Document

Step One: Please provide the following information.

1. Is this an initial application or are you changing/adding information to your destination point?

- A. ☐ initial application
- B. ☐ adding a new destination point/mailbox for customer Number Z _____
(Answer all questions.)
- C. ☐ change information for existing destination point/mailbox with TG _____
(Answer **fully** only those questions for which changes or additions are needed.)

2. What is the name of your organization? _____
(maximum 15 spaces)

3. Please indicate your type of organization.

- ☐ postsecondary school
- ☐ third-party servicer
- ☐ state scholarship agency
- ☐ guaranty agency for student loans
- ☐ lender for the FFEL Program or its servicer
- ☐ other _____
(describe)
- ☐ software provider or other organization wanting only software and documentation (Complete only Questions 6 and 9. You will not have access to Title IV WAN.)

4. Are you a Direct Loan school or a servicer for a Direct Loan school? ☐ Yes ☐ No

5. Please indicate if you will use a personal computer, a mainframe, or both to access Title IV WAN.

- ☐ personal computer ☐ mainframe ☐ both



New Enrollment Document (cont.)

- Allows access to NSLDS on-line
- Allows Electronic Data Exchange with ED application systems (CPS, FISAP, etc.)
- Used for new enrollment and changes, additions, or updates
- Downloadable from IFAP web site!! (<http://ifap.ed.gov>)
- Enrollment session available



New Enrollment Document (cont.)

- Original signatures required
- Signed by President/Chancellor/CEO
- Destination Point Administrator (DPA) responsibilities
- User Responsibility Statement



New Enrollment Document (cont.)

- **Destination Point Administrator**
 - Responsible for all data transmissions and password changes for a TG#
 - Can give others access to the Dest. Pt.
- **User Responsibility Statement**
 - Filled out by each user of EDconnect
 - Maintained on file with DPA



Authentication

- To reset Title IV-WAN password, must use any 2 of DPA's
 - Social Security Number
 - Date of Birth
 - Mother's Maiden Name
- More secure and easier than Customer #
- Use VPS or speak to Cust. Service Rep.



Changes to Voice Processing System

- Password resets now require any 2 of DPA's
 - Social Security Number
 - Date of Birth
- Two password reset options
 - Transmission
 - On-line Query
- Frequently Asked Questions



PC Hardware/Software Requirements

- IBM or fully IBM-compatible PC
200MHz Pentium Processor or comparable
- 32-bit operating system (Windows 95/98 or Windows NT 4.x)
- Internet Service Provider (ISP)
- Netscape Navigator or Internet Explorer web browser
- See Action Letter #2 (Oct. '97) for full Details



EDconn32 Software

- Year 2000 Compliant
- Greater flexibility and functionality within the EDconnect software
- Pop-Up menu system
- Support for long filenames within EDconnect
- TCP/IP Based file transfer via TIV-WAN Intranet
- Dial-up Networking (v1.2 or later)



Dial-Up Networking

- Windows 95
 - Will need Dial-Up Networking (DUN), version 1.2 or higher
- Windows 98
 - Ensure DUN component is installed
- Windows NT 4.0
 - Install Remote Access Service (RAS), then update NT using Service Pack 3 or 4



EDconn32 Software

- Replaces EDconnect 2.x and IAM-DOS
 - EDconnect 2.x and IAM-DOS are NOT Year 2000 compliant
- January 31, 1999 is the cutoff date for IAM (DOS) and 16-bit EDconnect
 - Title IV WAN will no longer accept files sent using the IAM (DOS) and 16-bit EDconnect software after the deadline



EDconn32 Software and Enterprise

- 32-bit EDconnect is the first step towards using the Internet for data transmissions
- Migrating to the Enterprise system
- The Enterprise system will be located at the BAND 1 data center



Conversion to EDconn32 Software

- 1) Install and Setup EDconn32
- 2) Perform password change and transmit test file
- 3) Use current EDconnect to receive all data
- 4) Call Title WAN to convert mailbox to Enterprise
- 5) Next day, transmit to download Message Class Table



Conversion to EDconn32

- You're now ready to use EDconn32!
- Upon conversion, all data in old mailbox is forwarded to new Enterprise mailbox
- Conversion deadline
- Cannot use former EDconnect software after conversion



EDconn32 Desk Reference

- New EDconnect 32-bit software desk reference guide
 - Similar to quick reference guides you already receive
 - Tips on the new EDconn32 software
 - Information on On-line Query
 - Frequently Asked Questions section



Wizards make setup easier!

Group Wizard - Title IV WAN Information

TG Number

TG Password Expiration

New

Verify

Change Type ☐ Network and Local ☒ Local Only

IP Address Information

Firewall IP Port

Server IP Port

3270 IP Port

Debug Tracing ☐ On ☒ Off

< Back Finish Cancel Help

User Wizard - Identification

User ID

User Password Expiration

Expiration Undetermined

New

Verify

Full Name

First Name

Middle Initial

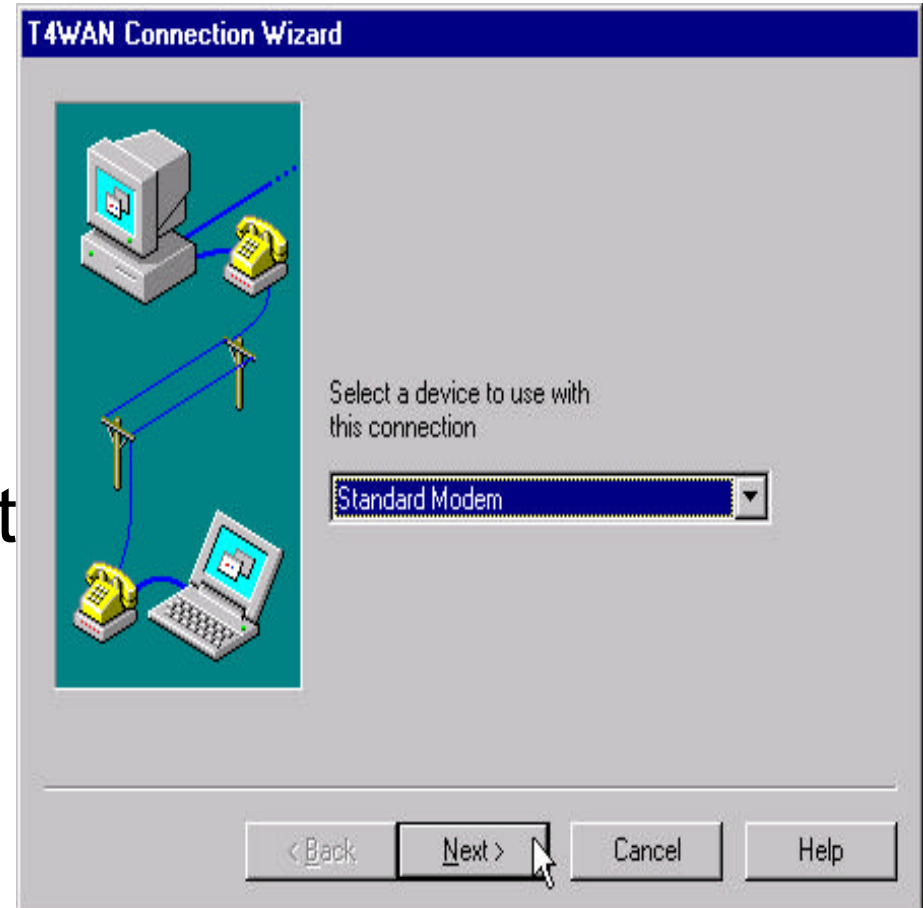
Last Name

< Back Next > Cancel Help



Connection Wizard

- Uses modem already defined in Windows
- No need to select modem from long list





What Will be Different?

- Security View
 - Security Groups
 - Security Users
- Transmission
- Archive View
- Password changes
- On-line Query

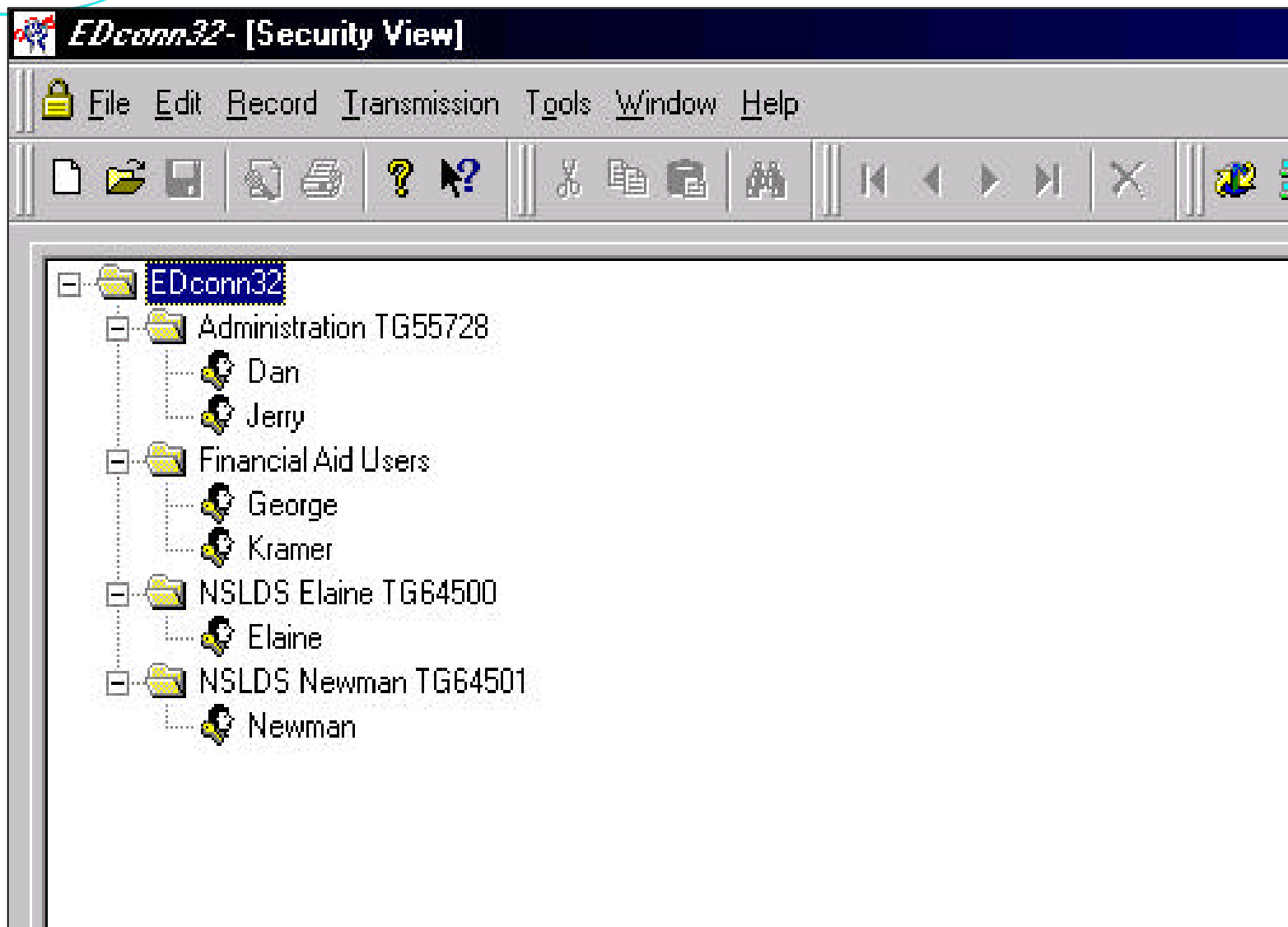


Security View

- Security Groups define TG#, password and access rights
- Security Users define who actually transmitted files and each user has a separate password to access software



Security View



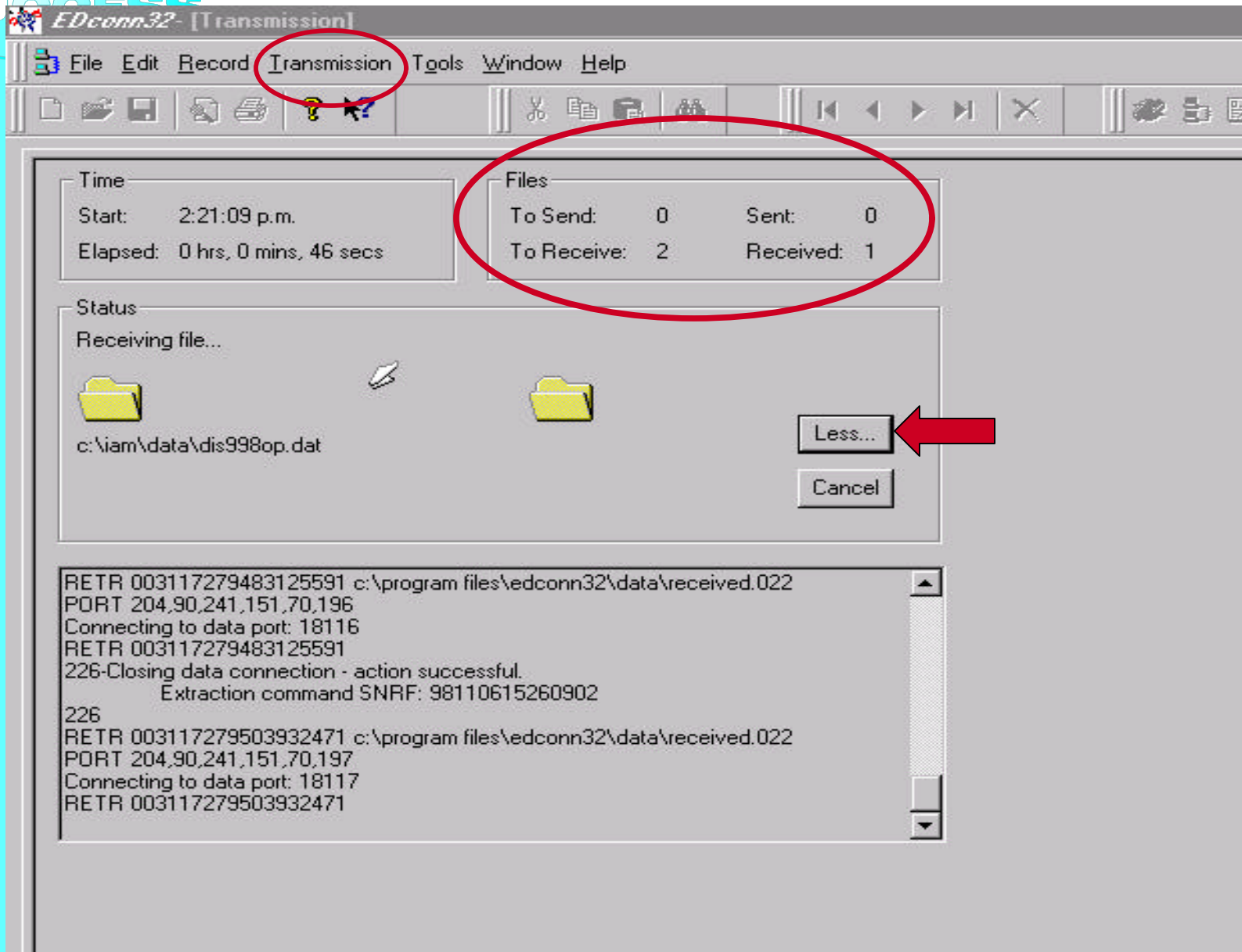


Transmission

- “Transmission Now” instead of “Transmit Now”
- Can transmit data and password simultaneously



Transmission





Activity Log View

- Easy way to track files sent and received
- No longer displays Batch ID
- Use Item Number to track files



Activity Log View

EDconn32- [Activity Log]

File Edit Record Transmission Tools Window Help

Description	Message Class	File Name	File Size	MailBox	Item Number
97-98 YTD ISIRS	YTDO98OP	c:\iam\data\ytdo98op.dat	0	TG50002	003117279340694726
Start of Transmission			0		
98-99 CORRECTIONS - DUPLICATES	CORR99IN	c:\iam\data\corr99in.008	71	TG50002	98110416395202
98-99 APPLICATIONS - INITIAL	EAPS99IN	c:\iam\data\leaps99in.006	1,956	TG50002	98110416395503
98-99 APPLICATIONS - INITIAL	EAPS99IN	c:\iam\data\leaps99in.007	16,300	TG50002	98110416395804
Start of Transmission			0		
All Data, All Messages - CPS	????????	c:\iam\data*.*		TG50003	
98-99 ISIR DATA - AUTOMATIC	SARA99OP	c:\iam\data\sara99op.013	0	TG50003	003119612220501157
98-99 ISIR DATA - AUTOMATIC	SARA99OP	c:\iam\data\sara99op.014	0	TG50003	003119612227497414
98-99 ISIR DATA - ELECTRONIC APPS	EAPS99OP	c:\iam\data\leaps99op.dat	0	TG50003	003119612234517649
98-99 ISIR DATA - CORREC.-DUPS.	SARR99OP	c:\iam\data\sarr99op.001	0	TG50003	003119612241597741
98-99 ERRORS - CORRECTION-DUPLICATE	SARE99OP	c:\iam\data\sare99op.001	0	TG50003	003119612248791862

Record 1

Transmission... Activity Log

For Help, press F1

Dan c:\program files\edconn32\edconn32.mdb

CAP NUM



Archive View

- Allows you to receive “lost” files within 7 days
- Batch ID is not displayed
- Use Item Number to track which file to select



Archive View

EDconn32- [Archive View]

File Edit Record Transmission Tools Window Help

	Move to TQ	Message Class	Item Number	Description	Sender ID
	<input checked="" type="checkbox"/>	SARA99OP	003119612220501157	98-99 ISIR DATA - AUTOMATIC	TG50003
	<input type="checkbox"/>	SARA99OP	003119612227497414	98-99 ISIR DATA - AUTOMATIC	TG50003
	<input type="checkbox"/>	EAPS99OP	003119612234517649	98-99 ISIR DATA - ELECTRONIC APPS	TG50003
	<input type="checkbox"/>	SARR99OP	003119612241597741	98-99 ISIR DATA - CORREC.-DUPS.	TG50003
	<input type="checkbox"/>	SARE99OP	003119612248791862	98-99 ERRORS - CORRECTION-DUPLICATE	TG50003
	<input type="checkbox"/>	EAPS98OP	003119612255837617	97-98 ELECTRONIC APPLICATION ISIRS	TG50003

Record 1

Security View Activity Log Archive View

For Help, press F1 Dan c:\program files\edconn32\edconn32.mdb NUM



Misc. New Features

EDconn32- [Activity Log]

File Edit Record Transmission Tools Window Help

Activity Log toolbar icons: [New] [Open] [Save] [Print] [Find] [Help] [Undo] [Redo] [Copy] [Paste] [Delete] [Insert] [Format] [Align] [Indent] [Outdent] [Bulleted List] [Numbered List] [Decrease Indent] [Increase Indent] [Table] [Chart] [Image] [Link] [Unlink] [Anchor] [Lock] [ABC] [Printer] [Refresh] [Close]

Activity	Project	Cycle	Description	Message Class	File Name	File Size	
Receive	CPS	97-98 Data	97-98 YTD ISIRS	YTDO98OP	c:\iam\data\ytdo98op.dat	0	T
Transmit			Start of Transmission			0	
Send	CPS	98-99 Data	98-99 CORRECTIONS - DUPLICATES	CORR99IN	c:\iam\data\corr99in.008	71	T
Send	CPS	98-99 Data	98-99 APPLICATIONS - INITIAL	EAPS99IN	c:\iam\data\laps99in.006	1,956	T
Send	CPS	98-99 Data	98-99 APPLICATIONS - INITIAL	EAPS99IN	c:\iam\data\laps99in.007	16,300	T
Transmit			Start of Transmission			0	
Request	CPS	All	All Data, All Messages - CPS	????????	c:\iam\data*.*		T
Receive	CPS	98-99 Data	98-99 ISIR DATA - AUTOMATIC	SARA99OP	c:\iam\data\sara99op.013	0	T
Receive	CPS	98-99 Data	98-99 ISIR DATA - AUTOMATIC	SARA99OP	c:\iam\data\sara99op.014	0	T
Receive	CPS	98-99 Data	98-99 ISIR DATA - ELECTRONIC APPS	EAPS99OP	c:\iam\data\laps99op.dat	0	T
Receive	CPS	98-99 Data	98-99 ISIR DATA - CORRECTIONS	SARR99OP	c:\iam\data\sarr99op.001	0	T
Receive	CPS	98-99 Data	98-99 ERRORS - CORRECTION-DUPLICATE	SARE99OP	c:\iam\data\sare99op.001	0	T

Record 404

Security View Activity Log Archive View

For Help, press F1 Dan c:\program files\edconn32\edconn32.mdb CAP NUM



Misc. New Features

EDconn32- [Activity Log]

File Edit Record Transmission Tools Window Help

Transmission Queue

Activity	Project	Cycle	Description	Message Class	File Name	File Size	
Receive	CPS	97-98 Data	97-98 YTD ISIRS	YTDO98OP	c:\iam\data\ytdo98op.dat	0	T
Transmit			Start of Transmission			0	
Send	CPS	98-99 Data	98-99 CORRECTIONS - DUPLICATES	CORR99IN	c:\iam\data\corr99in.008	71	T
Send	CPS	98-99 Data	98-99 APPLICATIONS - INITIAL	EAPS99IN	c:\iam\data\laps99in.006	1,956	T
Send	CPS	98-99 Data	98-99 APPLICATIONS - INITIAL	EAPS99IN	c:\iam\data\laps99in.007	16,300	T
Transmit			Start of Transmission			0	
Request	CPS	All	All Data, All Messages - CPS	????????	c:\iam\data*.*		T
Receive	CPS	98-99 Data	98-99 ISIR DATA - AUTOMATIC	SARA99OP	c:\iam\data\sara99op.013	0	T
Receive	CPS	98-99 Data	98-99 ISIR DATA - AUTOMATIC	SARA99OP	c:\iam\data\sara99op.014	0	T
Receive	CPS	98-99 Data	98-99 ISIR DATA - ELECTRONIC APPS	EAPS99OP	c:\iam\data\laps99op.dat	0	T
Receive	CPS	98-99 Data	98-99 ISIR DATA - CORRECTIONS	SARR99OP	c:\iam\data\sarr99op.001	0	T
Receive	CPS	98-99 Data	98-99 ERRORS - CORRECTION-DUPLICATE	SARE99OP	c:\iam\data\sare99op.001	0	T

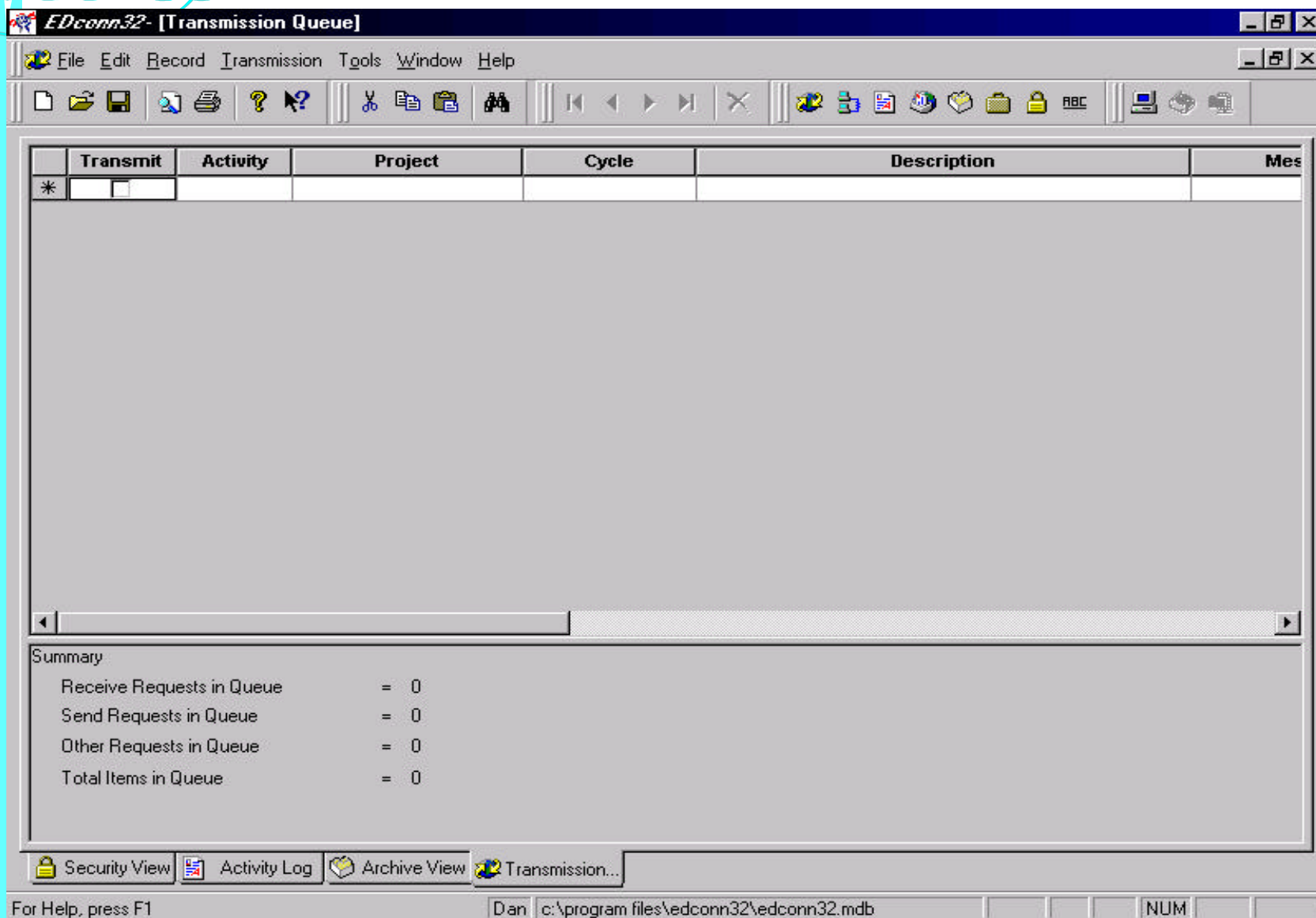
Record 404

Security View Activity Log Archive View

New Transmission Queue Dan c:\program files\edconn32\edconn32.mdb NUM



Misc. New Features





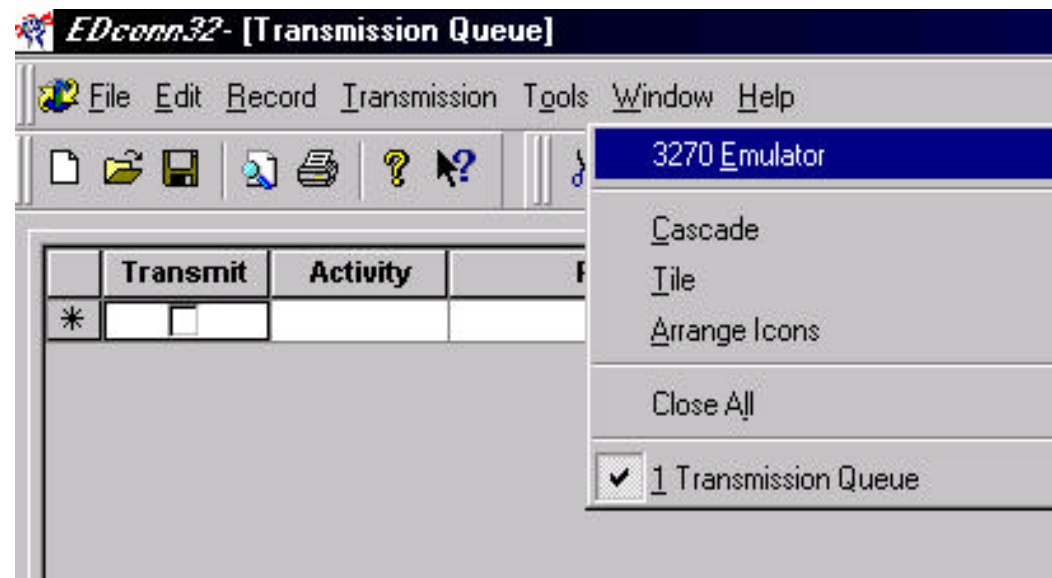
Password changes

- New authentication data
- Still 120-day expiration
- Can change network password after expiration without calling to reset
- If password needs to be reset, it becomes **PASSWORD**
- Case-sensitive



On-Line Query

- Start EDconn32, and go to Window - 3270
- Login with TG# and Password
- You're now connected to Title-IV WAN On-Line Query



On-Line Query

```

Host Edit Setup Help
      **          * *
    *  *  *      *  *
  *    *  *      *  *
*    *  *  *    *  *
  * **      *  *  *
    *  *  *  *  *  *
      **  **      *  *
        *  *      *
      *  *  *
    *  *  *  *  *
  *    *  *  *  *  *
*    *  *  *  *  *
  *    *  *  *  *  *
    *  *      *  *
      **          *  *

INFORMATION
SERVICES

MARK 3000

SESSION MANAGER

FOR HELP, HIT PF1

TRANSFER
11/06/98 16:48:41
=====
|  TERMINAL  |  MODEL  |  SYSTEM  |  USERID  |  PASSWORD  |  NEW PASSWORD  |
|=====|
|  TNCS0016  |  3278-2  |  MARK3000  |  _  |  |  |
|=====|
NEWS: WELCOME TO GE INFORMATION SERVICES' SESSION MANAGER

20/39 CAPS NUM 15:51:23 IBM-3278-2

```

- On-line query has separate password

[illegible]



Mainframe Connectivity to Title IV WAN

- Move from Open*Net to Enterprise
- Move to Open Technologies
- Non-proprietary protocols such as
 - TCP/IP
 - FTP
 - TN3270
- Session 43, Mainframe Connectivity to Title IV Wide Area Network



Future of Title IV WAN

- Enrollment on the Internet
- Download software from the Internet
- EDconn32 via your current Internet connection
- Internet based On-line Query