

Gainful Employment: Reading Your Draft GE Completers List Files

June 2, 2016 and June 7, 2016

Agenda

- GE Process
- GE Completers List
- Requesting GE Completers List Report
- GE Completers List File Organization
- GE Completers List Excel Import Tool
- GE Completers List Viewer Tool
- Challenging the GE Completers List Data

GE Process

- **Draft GE Completers List** (*June 2nd & 7th Webinar*)
- **Draft GE Completers List Challenge** (*June 14th & 16th Webinar*)
- Final GE Completers List
- Request Earnings Data from SSA by Program
- Draft GE Debt-to-Earnings Calculation
- Draft GE Debt-to-Earnings Challenge
- Final GE Debt-to-Earnings Calculation
- GE Alternate Earnings Appeal

GE Completers List

- What is a Completers List?
 - A list of the students who completed a GE Program during the cohort period as reported by the institution
- Completers List Use
 - Institutions review the Draft GE Completers List for accuracy
 - Obtaining the annual earnings from SSA
 - To calculate GE Debt-to-Earnings rates
 - For earnings for disclosures

GE Completers List – Cohort Period

- Students who completed a GE Program during the Cohort Period will appear on the GE Completers List
- Cohort Period
 - For current Completers List:
 - 2-year (2YP) cohort = students graduating in 2010-2011 and 2011-2012 award years
 - 4-year (4YP) cohort = students graduating in 2008-2009, 2009-2010, 2010-2011, and 2011-2012 award years
 - 2-year (2YP-R) cohort = students in medical/dental residency programs graduating in 2007-2008 and 2008-2009 award years

GE Completers List - Exclusions

- Students are excluded from both the numerator and denominator of the Debt-to-Earnings rates for the following reasons:

- In School
- Loan In Military Deferment or Military Grace status
- Death
- Disability (Loan status or holder)
- Subsequently completed higher credential GE program
- SSA match limit

Exclusions an institution will review in the GE Completers List.

- In school and/or loan in military deferment/grace exclusions are based on the calendar year (2014) which is the earnings year from SSA

Draft GE Completers List

- Draft Completers List Detail
 - Sent to the institution's TG mailbox associated with the Batch Gainful Employment Notification Package function
 - Delivered with message class: GECOMBOP
- File Layout for the GE Completers list is located in the [Gainful Employment User Guide](#) Appendix C

Requesting GE Completers List Report


Requesting GE Completers List Report

Federal Student Aid

An OFFICE of the U.S. DEPARTMENT of EDUCATION

PROUD SPONSOR of
the AMERICAN MIND™

National Student Loan Data System (NSLDS)



Menu




Aid

Enroll

Org

Report

Tran










  

Report List | [Web Report List](#)

FSA ID: NSL.SCTST2.FSA logged on as: TEST USER from [NORTH SOUTH UNIVERSITY](#) / TG54560 / SCTST2





Report List

Search Report ID:

	Report ID	Names	Log Page
1	DELQ01	DELINQUENT BORROWER REPORT	
2	DER001	DATE ENTERED REPAYMENT REPORT	
3	DRC015	24 MONTH REPAYMENT INFO LOAN DETAIL	
4	DRC016	36 MONTH REPAYMENT INFO LOAN DETAIL	
5	DRC035	SCHOOL COHORT DEFAULT RATE HIST RPT	
6	FAT001	REQUEST FOR FINANCIAL AID HISTORY	
7	GENEX1	GE DATA EXTRACT FILE	
8	GEPDC1	GE COMPLETERS LIST	
9	OVP001	SCHOOL OVERPAYMENT REPORT	
10			

Requesting GE Completers List Report

- To request an ad-hoc report click on the corresponding active bullet number to the left of the Report ID column

	Report ID	Names	Log Page
1	DELQ01	DELINQUENT BORROWER REPORT	
2			
3			
4			
5			
6			
7	GENEX1	GE DATA EXTRACT FILE	
8	GEPDC1	GE COMPLETERS LIST	
9	OVP001	SCHOOL OVERPAYMENT REPORT	

Requesting GE Completers List Report

- *Select File Format, Output Results, then Submit and Confirm*

Federal Student Aid National Student Loan Data System (NSLDS)
An OFFICE of the U.S. DEPARTMENT of EDUCATION

NSLDS Menu Aid Enroll Org Report Tran

Report List | Web Report List

FSA ID: NSL.SCTST2.FSA logged on as: TEST USER from [NORTH SOUTH UNIVERSITY](#) / TG54560 / SCTST2

Return to Report List ID: [GEPDC1](#) Type: Extract Name: GE COMPLETERS LIST Go to Report Log

Report Parameters

School Code:	067899
File Format:	--Select--
Output Results:	--Select--
Sort By:	Multiple Files
Output Medium:	SAIG

Submit

School Code:	067899
File Format:	--Select--
Output Results:	--Select--
Sort By:	Backup Details
Output Medium:	Summary Level/Condensed

Requesting GE Completers List Report

- File Format Parameter
 - School users who select the **Single File** option will receive the Completers List for all GE programs for the institution during the current Calculation Year in a single file
 - School users who select the **Multiple Files** option will receive backup data for each GE program for the institution during the current Calculation Year in separate files.

Requesting GE Completers List Report

- Output Results Parameter
 - When selecting **Backup Details**, the output will include the following records:
 - Header Record (Record type – 00)
 - Program Header Record (Record type – 05)
 - Program Student Record (Record type – 10)
 - Program GE Record (Record type – 15)
 - Program Student Enrollment in Earnings Year Record (Record type – 40)
 - Program Student Deferment in Earnings Year Record (Record type – 45)
 - Program Student in GE Attendance Earnings Year Record (Record type – 50)
 - Program Loan Holders Record (Record type – 55)
 - Trailer Record (Record type – 99)

Requesting GE Completers List Report

- Output Results Parameter (continued)
- When selecting **Summary Level/Condensed**, the output will include the following records:
 - Header Record (Record type – 00)
 - Program Header Record (Record type – 05)
 - Program Student Record (Record type – 10)
 - Program GE Record (Record type – 15)
 - Trailer Record (Record type – 99)

Requesting GE Completers List Report

- The GE Completers List Report will produce the GE completers reported to NSLDS that relate to the portion (draft or final) of the GE Calculation Cycle that is occurring at the time of the request.
- GE Completers List
 - Sent to the TG mailbox associated with the user that made the report request
 - Delivered with message class:
 - Summary Level/Condensed : GECOMSOP
 - Backup Detail : GECOMPOP
- File Layout for the GE Completers List Report is located in the [Gainful Employment User Guide](#) Appendix B.3

GE Completers List File Organization

GE Completers List File

- Consists of multiple record types
 - 1 File Header
 - 7 Detail Record Types
 - 1 File Trailer
- All files will have a Header and Trailer record
- Most files will have all 7 detail record types

GE Completers List File

- Header Record (Record type – 00)
 - Program Header Record (Record type – 05)
 - Program Student Record (Record type – 10)
 - Program GE Record (Record type – 15)
 - Program Student Enrollment in Earnings Year Record (Record type – 40)
 - Program Student Deferment in Earnings Year Record (Record type – 45)
 - Program Student in GE Attendance Earnings Year Record (Record type – 50)
 - Program Loan Holders Record (Record type – 55)
- Trailer Record (Record type – 99)

GE Completers List File Layout

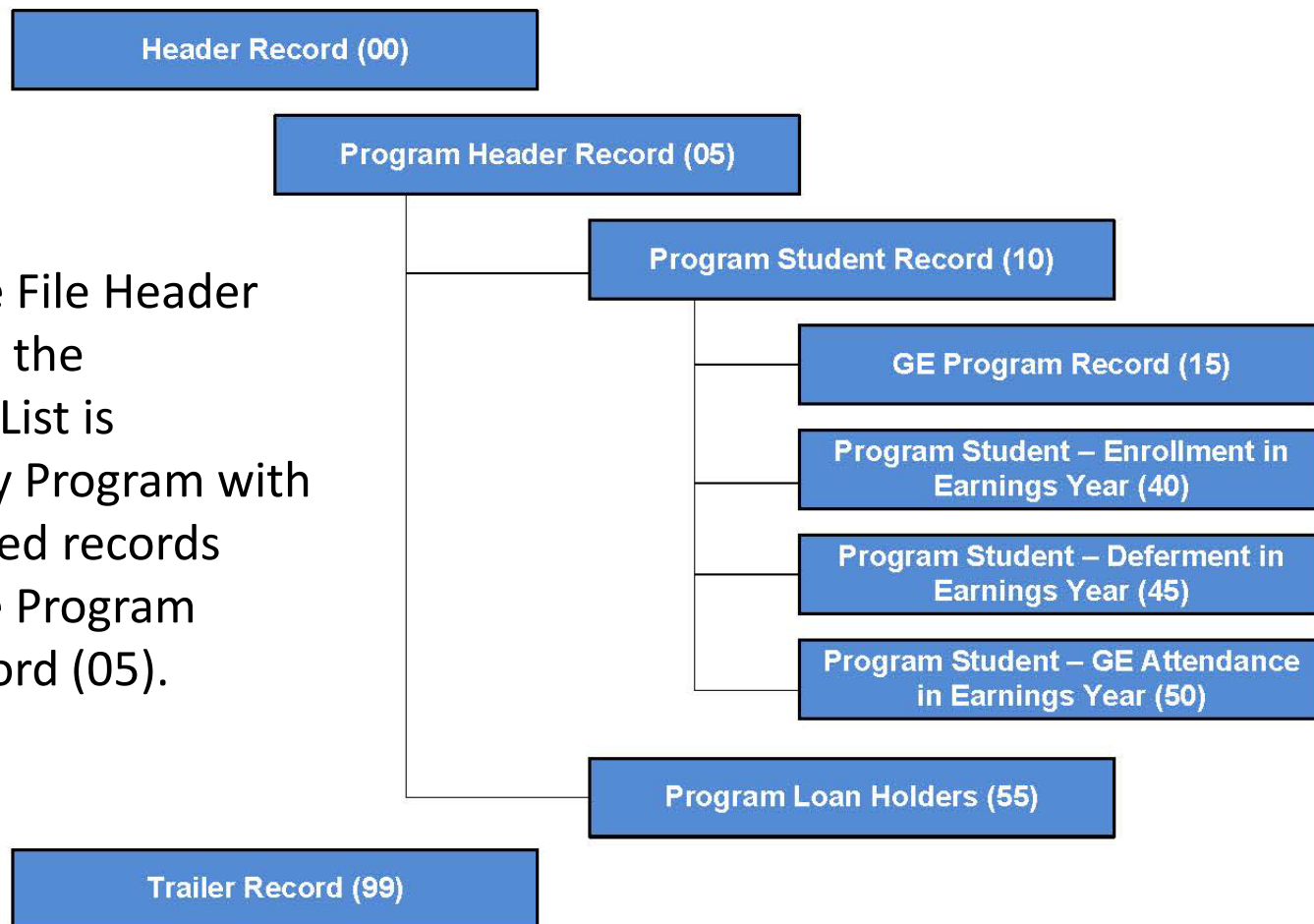
Position From	Position To	Field Name	Field Description	Field Format	Field Length
1	6	Institution Code (OPEID)	The six-digit OPEID code used to identify the institution	Character	6
7	31	Filler	Filler	Character	25
32	33	Record Type	Indicator used to identify the Header Record Record will be populated with 00	Character	2
34	98	Institution Name	The name of the Institution	Character	65
99	106	Requesting User	System identifier making the extract request	Character	8
107	114	Request Date	Date of extract request	Character	8
115	214	Request Parameters	Parameters of extract request	Character	100
215	350	Filler	Filler	Character	136

Equals
Header
Record

Note: Above is an excerpt from the NSLDS GE Completers List File Record Layout in fixed-width format.

GE Completers List File

Beneath the File Header Record (00), the Completers List is organized by Program with the associated records beneath the Program Header Record (05).



File Contents

Record
Type
Indicator

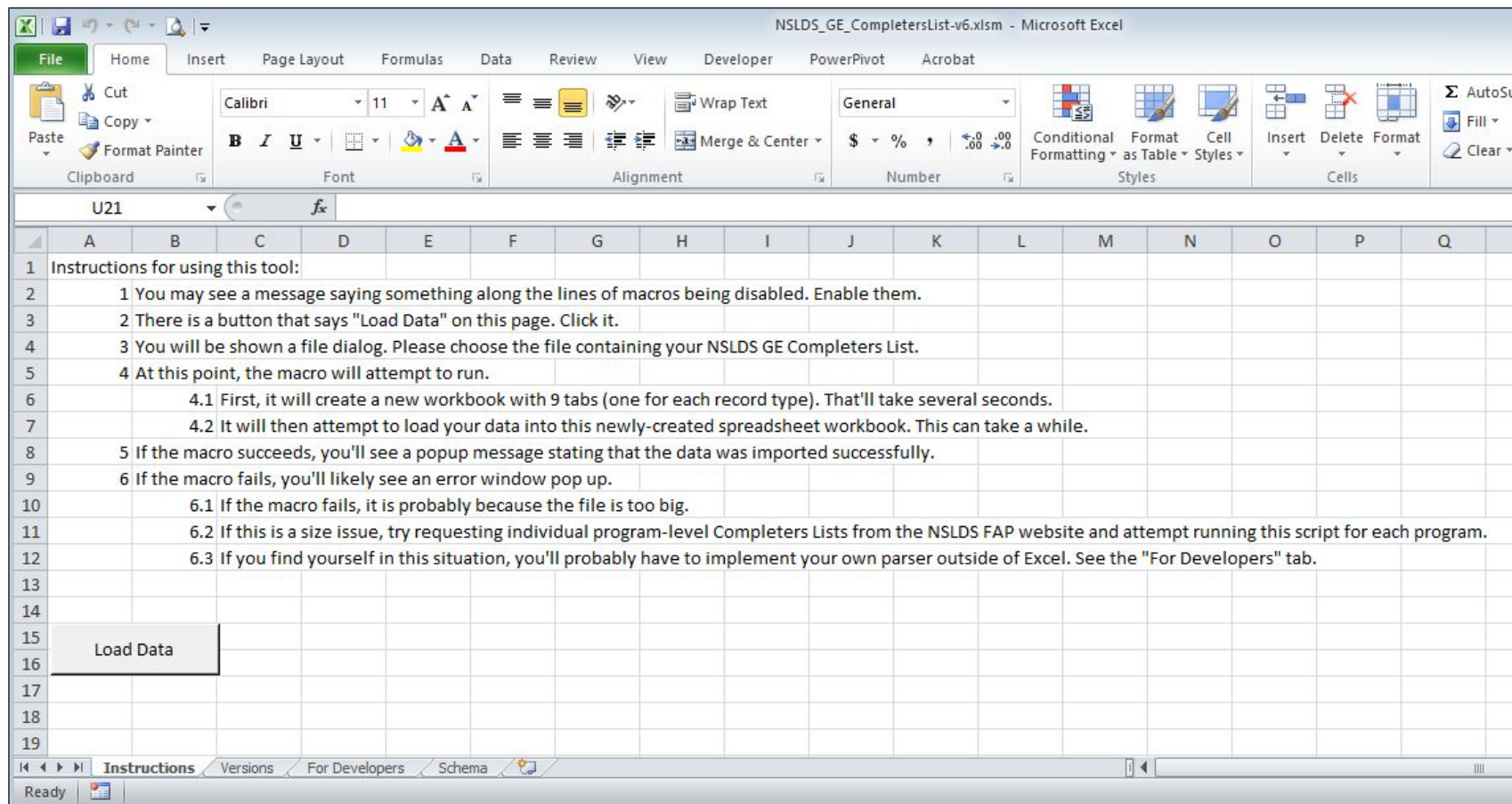
067899	9999	0000000000	00NORTH SOUTH UNIVERSITY
067899	2015010903012000072828105		Animal Health.
067899	201501090301200000001911000011		Y555110105LESLIE
067899	20150109030123300500031150001120095		0678992008 200903
067899	201501090301200005000114000011		067899 UNIVERSITY O
067899	201501090301200000001914500011		0678990020090901SFAE
067899	201501090301210005000115000011		010902COUNTY UNIVERSIT
067899	201501090301200000010111552800022BIRMINGHAM TRUST NATIONAL BANK		
067899	2015010101012000000000105		AGRICULTURAL BUSINESS
067899	201501010101200000000011012345		2999001234JAMES
067899	201501010101200000000011512345A123Z		0678992012201320080515
067899	201501010101200000000014012345		064899 UNIVERISTY O
067899	201501010101200000000014512345		0678990020120815D0BEP
067899	201501010101200000000015012345		099867STATE UNIVERSITY
067899	20150101010120000000001552800022BIRMINGHAM TRUST NATIONAL BANK		
067899	999999 0000000000	99	NORTH SOUTH UNIVERSITY

GE Completers List Excel Import Tool

GE Completers List XLS Import Tool

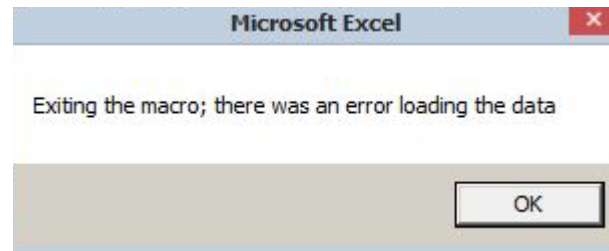
- Excel-based tool that parses Completers List Backup File into its component record types
- Useful for view of data related to single record types
- SSN added to keys for other records to aid in readability across record types
- Very useful for parsing backup file prior to importing into Access for those schools wishing to use Access.
- Cannot upload Completer List Backup File containing more than 32,767 rows
 - General workaround – request GE program-specific backup files via NSLDS FAP web site
- Available for download on the Information for Financial Aid Professionals (IFAP) Web site

GE Completers List XLS Import Tool

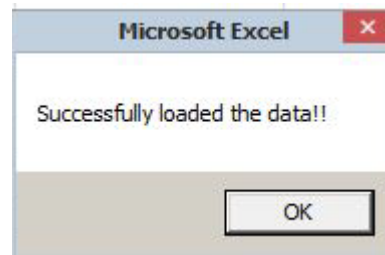


GE Completers List XLS Import Tool

- If file load fails, error message presented. Review error log file, *nslds_ge_cl.log*, to determine possible. Located in directory where tool located.

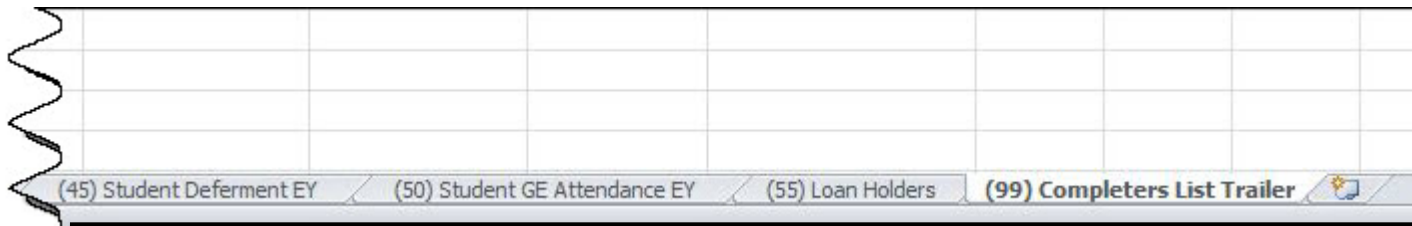
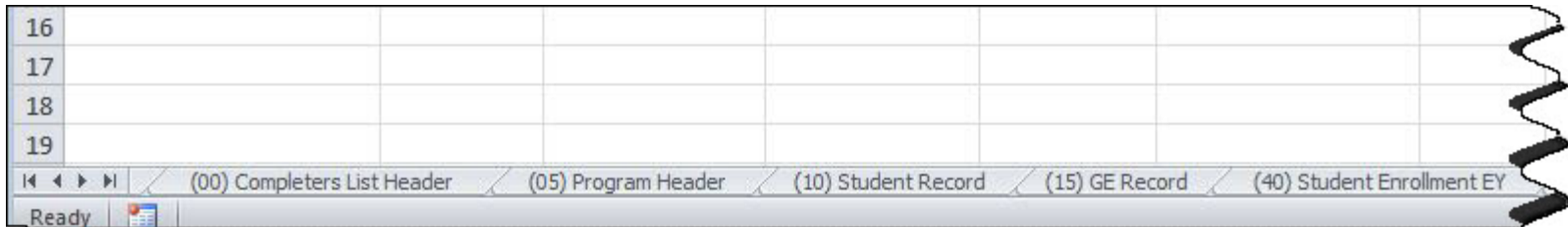


- If file load succeeds, completion message displayed and new Excel workbook created.



GE Completers List XLS Import Tool

- New workbook has each Completer List record type and associated data on a separate tab.



GE Completers List XLS Import Tool

- Example of data tab – 05 – GE Programs Data

A1 f _x Institution Code (OPEID)									
	A	B	C	D	E	F	G	H	I
1	Institution Code (OPEID)	Debt Measures Year (DMYR)	CIP Code	Credential Level	Calculation Type	Calculation Line Number	Line Revision Indicator	Record Type	Program Name
2	067899	2015	110103	03	2	000000001	1	05	Information Te
3	067899	2015	110901	02	2	000000001	1	05	Computer Syst
4	067899	2015	220301	01	2	000000001	1	05	Legal Adminis
5	067899	2015	220302	01	2	000000001	1	05	Legal Assistan
6	067899	2015	220302	02	2	000000001	1	05	Legal Assistan
7	067899	2015	220302	03	2	000000001	1	05	Legal Assistan
8	067899	2015	310507	01	2	000000001	1	05	Physical Fitne:
9	067899	2015	310507	02	2	000000001	1	05	Physical Fitne:
10	067899	2015	310507	03	2	000000001	1	05	Physical Fitne:
11	067899	2015	430103	02	2	000000001	1	05	Criminal Justic
12	067899	2015	430103	03	2	000000001	1	05	Criminal Justic
13	067899	2015	500409	01	2	000000001	1	05	Graphic Design

- Layout provided on the Schema tab in original XLS tool workbook



GE Completers List Viewer Tool

GE Completers List Viewer Tool

- The GE Completers List View tool provides a simplified way for institutions to view their backup detail report
- To be used with:
 - Pushed GE Completers List Report – GECOMBOP Message Class
or
 - Requested GE Completers List Report (GEPDC1) – GECOMPOP Message Class (detail) or GECOMSOP Class (summary)
- Available for download on the Information for Financial Aid Professionals (IFAP) Web site

GE Completers List Viewer Tool

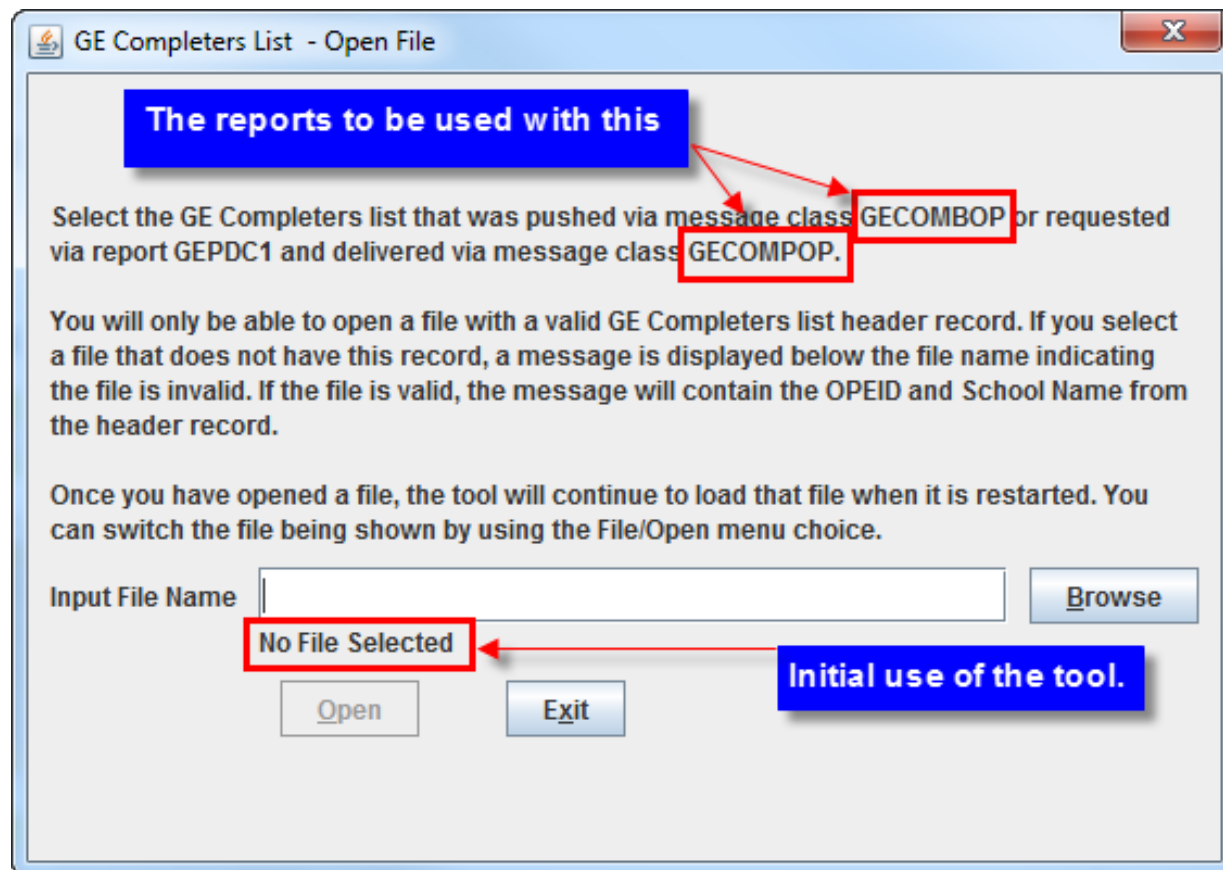
- Detailed instructions for the GE Completers List Viewer, including how to download the tool, are available on IFAP
- After downloading the GE Completers List Viewer tool from IFAP and the GE Completers List backup detail from SAIG, the user will click the icon to open the tool



NsldsGeClViewer.jar

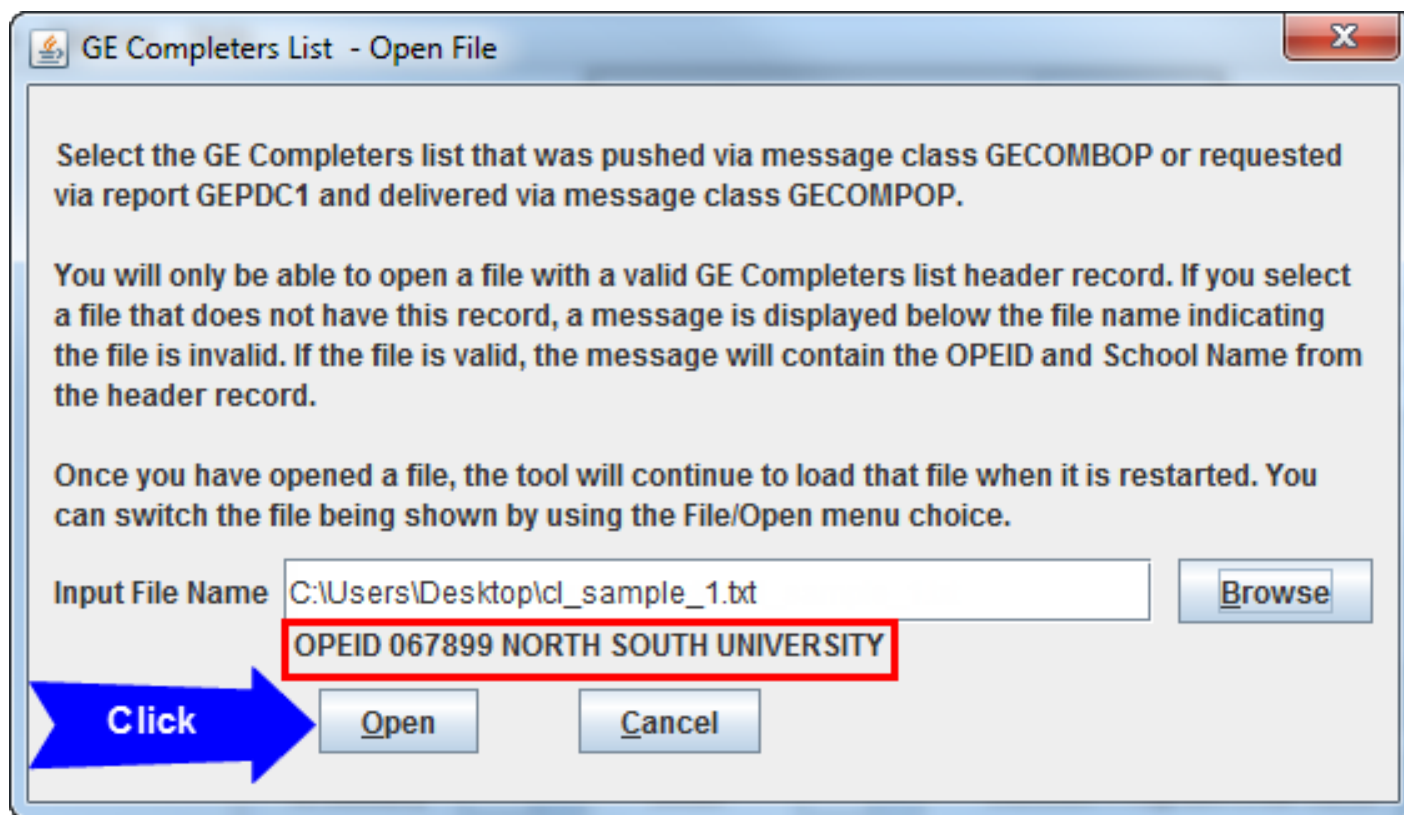
GE Completers List Viewer Tool

Open File box details which reports are to be used with the tool and allows the user to browse for the downloaded GE Completers List backup file



GE Completers List Viewer Tool

After selecting the correct file, your institution's OPEID and name will appear in the Open File box, click the Open button to display data



GE Completers List Viewer Tool

The tool displays the content of your institution's GE Completers List backup detail file

NSLDS GE Completers List Viewer - School 067899 NORTH SOUTH UNIVERSITY

File Options Help

Program/Student Switch

Filter

CIP Code

Credential Level

01 - UNDERGRADUATE CERTIFICATE OR DIPLOMA PROGRAM

02 - ASSOCIATE'S DEGREE

03 - BACHELOR'S DEGREE

05 - MASTER'S DEGREE

Program

Evaluation Term

Max Borrower Count

Completer List Exclusions

Results match ☒ Any ☐ All

In School ☐ Disabled ☐ Higher Cred Level ☐

In Military ☐ Dead ☐ Outside Program Eval Term ☐

Filter None

Sort SSN

Jump: CipCode,CL,Stuld

Programs (count=32)

Cip Code	Cred Level	Program Name	Eval Term	Start Year	End Year	Borrow Count	2yr Count
110103	03	Information Technology.	4yr	2009	2012	22	16
110901	02	Computer Systems Networking and Telecommunications.	2yr	2011	2012	42	42
220301	01	Legal Administrative Assistant/Secretary.	4yr	2009	2012	6	3
220302	01	Legal Assistant/Paralegal.	2yr	2011	2012	39	39
220302	02	Legal Assistant/Paralegal.	2yr	2011	2012	70	70
220302	03	Legal Assistant/Paralegal.	4yr	2009	2012	27	21
310507	01	Physical Fitness Technician.	4yr	2009	2012	3	1

Students (count=0)

SSN	Name (Last, First, Middle)	Date of Birth	In School	In Military	Disabled	Dead	Higher Cred	Qual Term
-----	----------------------------	---------------	-----------	-------------	----------	------	-------------	-----------

GE Completers List Viewer Tool

- View Options
 - Program/Student Switch
 - Jump

NSLDS GE Completers List Viewer - School 067899 NORTH SOUTH UNIVERSITY

File Options Help

Program/Student Switch

Filter

CIP Code

Credential Level

- 01 - UNDERGRADUATE CERTIFICATE OR DIPLOMA PROGRAM
- 02 - ASSOCIATE'S DEGREE
- 03 - BACHELOR'S DEGREE
- 05 - MASTER'S DEGREE

Program

Evaluation Term

Max Borrower Count

Completer List Exclusions

Results match ☒ Any ☐ All

In School ☐ Disabled ☐ Higher Cred Level ☐

In Military ☐ Dead ☐ Outside Program Eval Term ☐

Filter None

Sort SSN

Jump: CipCode,CL,Stuld

Programs (count=32)

GE Completers List Viewer Tool

Program/Student is the default view option and displays the Programs data, then the Students data

NSLDS GE Completers List Viewer - School 067899 NORTH SOUTH UNIVERSITY

File Options Help

Program/Student Switch

Filter

CIP Code

Credential Level

01 - UNDERGRADUATE CERTIFICATE OR DIPLOMA PROGRAM

02 - ASSOCIATE'S DEGREE

03 - BACHELOR'S DEGREE

05 - MASTER'S DEGREE

Program

Evaluation Term

Max Borrower Count

Completer List Exclusions

Results match ☒ Any ☐ All

In School ☐ Disabled ☐ Higher Cred Level ☐

In Military ☐ Dead ☐ Outside Program Eval Term ☐

Filter: None

Sort: SSN

Jump: CIPCode,CL,Stuld

Programs (count=32)

CIP Code	Cred Level	Program Name	Eval Term	Start Year	End Year	Borrow Count	2yr Count
110103	03	Information Technology.	4yr	2009	2012	22	16
110901	02	Computer Systems Networking and Telecommunications.	2yr	2011	2012	42	42
220301	01	Legal Administrative Assistant/Secretary.	4yr	2009	2012	6	3
220302	01	Legal Assistant/Paralegal.	2yr	2011	2012	39	39
220302	02	Legal Assistant/Paralegal.	2yr	2011	2012	70	70
220302	03	Legal Assistant/Paralegal.	4yr	2009	2012	27	21
310507	01	Physical Fitness Technician.	4yr	2009	2012	3	1

Students (count=0)

SSN	Name (Last, First, Middle)	Date of Birth	In School	In Military	Disabled	Dead	Higher Cred	Qual Term
-----	----------------------------	---------------	-----------	-------------	----------	------	-------------	-----------

GE Completers List Viewer Tool

Student/Program displays the Students data

NSLDS GE Completers List Viewer - School 067899 NORTH SOUTH UNIVERSITY

File Options Help

Student/Program Switch

Filter

CIP Code

Credential Level

- 01 - UNDERGRADUATE CERTIFICATE OR DIPLOMA PROGRAM
- 02 - ASSOCIATE'S DEGREE
- 03 - BACHELOR'S DEGREE
- 05 - MASTER'S DEGREE

Program

Evaluation Term

Max Borrower Count

Completer List Exclusions

Results match ☒ Any ☐ All

In School ☐ Disabled ☐ Higher Cred Level ☐

In Military ☐ Dead ☐ Outside Program Eval Term ☐

Filter None

Sort SSN

Jump: CipCode,CL,Stuld

Students (count=1833)

SSN	Name (Last, First, Middle)	Date of Birth	In School	In Military	Disabled	Dead	Has Higher Cred
001-00-0069	SHARP, FIRST2249, P	1934-06-19	Y	N	N	N	Y
001-00-0169	RODEN, FIRST2350, M	1929-04-10	N	N	N	N	N
001-00-0269	FIFE, FIRST2451, M	1931-10-26	N	N	N	N	N
001-00-0369	WHITE, FIRST2552, L	1926-03-22	Y	N	N	N	Y
001-00-0469	GAMEZ, FIRST2653, D	1939-06-28	Y	N	N	N	N
001-00-0569	COOKE, FIRST2754	1938-08-19	N	N	N	N	N
001-00-0669	BURNS, FIRST2855, A	1928-08-05	N	N	N	N	N

GE Completers List Viewer Tool

- In the Program/Student view, select a program and then student
- Selecting a student displays the Current Program GE Records data

NSLDS GE Completers List Viewer - School 067899 NORTH SOUTH UNIVERSITY

File Options Help

Program/Student Switch

Filter

Code,CL,Stuld

Programs (count=32)

Cip Code	Cred Level	Program Name	Eval Term	Start Year	End Year	Borrow Count	2yr Count
110103	03	Information Technology.	4yr	2009	2012	22	16
110901	02	Computer Systems Networking and Telecommunications.	2yr	2011	2012	42	42
220301	01	Legal Administrative Assistant/Secretary.	4yr	2009	2012	6	3
220302	01	Legal Assistant/Paralegal.	2yr	2011	2012	39	39
220302	02	Legal Assistant/Paralegal.	2yr	2011	2012	70	70
220302	03	Legal Assistant/Paralegal.	4yr	2009	2012	27	21
310507	01	Physical Fitness Technician.	4yr	2009	2012	3	1

Students (count=69)

SSN	Name (Last, First, Middle)	Date of Birth	In School	In Military	Disabled	Dead	Higher Cred	Qual Term
001-00-0069	SHARP, FIRST2249, P	1934-06-19	Y	N	N	N	Y	2yr
011-00-0030	TRAIL, FIRST8210, D	1912-06-16	N	N	N	N	N	2yr
021-00-0091	BRATT, FIRST4471, J	1933-10-09	N	N	N	N	Y	2yr
031-00-0052	BEANE, FIRST0532, A	1917-01-17	Y	N	N	N	N	2yr
051-00-0074	HOARD, FIRST2754, M	1924-11-25	Y	N	N	N	Y	2yr
061-00-0035	NEALE II, FIRST8715, E	1933-06-03	Y	N	N	Y	N	2yr
081-00-0057	CRANK, FIRST1037, A	1929-01-28	Y	N	N	N	N	2yr
101-00-0079	EWART, FIRST3259	1926-04-13	N	N	N	N	N	2yr

SSN 011-00-0030 Name TRAIL, FIRST8210, D Date of Birth 1912-06-16

Current Program GE Records

Cip Code, Cred Lvl, Stuld	Qual Term	Higher Cred	Reported Under OPEID,Cip,CredLvl	Begin Date	End Date	Private Debt Amt	Institutional Debt Amt	Tuition And Fees	Allowance Books,Supply
110901,02,00AAD	2	N		2010-10-04	2012-06-22	0	0	22670	2025

GE Completers List Viewer Tool

The data in the Programs section is pulled from the Program Header Record (Record type – 05)

Programs (count=32)							
Cip Code	Cred Level	Program Name	Eval Term	Start Year	End Year	Borrow Count	2yr Count
110103	03	Information Technology.	4yr	2009	2012	22	16
110901	02	Computer Systems Networking and Telecommunications.	2yr	2011	2012	42	42
220301	01	Legal Administrative Assistant/Secretary.	4yr	2009	2012	6	3
220302	01	Legal Assistant/Paralegal.	2yr	2011	2012	39	39
220302	02	Legal Assistant/Paralegal.	2yr	2011	2012	70	70
220302	03	Legal Assistant/Paralegal.	4yr	2009	2012	27	21
310507	01	Physical Fitness Technician.	4yr	2009	2012	3	1

Pos FR	Pos TO	Data Element	Description	Field Format	Lth
13	18	CIP Code	Classification of Instructional Program (CIP) code for the educational program for which the Debt Measures were calculated.	Char.	6
19	20	Credential Level	Level of degree/certificate/credential for the GE Program	Char.	2
34	153	Program Name	Name of the program designated by the CIP code. The National Center for Education Statistics assigns the names to CIP codes.	Char.	120
163	171	Borrower Count for 2 Year Period	Count of Borrowers for 2-Year Period.	Num.	9
172	180	Borrower Count Included in Calculation	Count of the number of borrowers included in the calculation.	Num.	9
181	181	Rate Evaluation Period	The period of time for which the rate is based. Valid Values: 2 - 2YP 4 - 4YP A - Transitional	Char.	1
182	185	Rate Evaluation Period Start Year	The year that the rate evaluation period begins.	Char.	4
186	189	Rate Evaluation Period End Year	The year that the rate evaluation period ends.	Char.	4

GE Completers List Viewer Tool

The data in the Student section is pulled from the Program Student Record (Record type – 10)

Students (count=69)									
SSN	Name (Last, First, Middle)	Date of Birth	In School	In Military	Disabled	Dead	Higher Cred	Qual Term	
001-00-0069	SHARP, FIRST2249, P	1934-06-19	Y	N	N	N	Y	2yr	
011-00-0030	TRAIL, FIRST8210, D	1912-06-16	N	N	N	N	N	2yr	
021-00-0091	BRATT, FIRST4471, J	1933-10-09	N	N	N	N	Y	2yr	
024-00-0050	BEANE, FIRST0500, A	1947-04-17	Y	N	N	N	N	2yr	

Pos FR	Pos TO	Data Element	Description	Field Format	Lth
51	51	Qualifying Evaluation Period	Indicator used to identify whether the student qualifies to be included in the 2-year evaluation period.	Char.	1
52	60	Student Social Security Number	The student's Social Security Number as reported by the institution.	Char.	9
61	95	Student First Name	Student's first name as reported by the institution.	Char.	35
96	130	Student Middle Name	Student's middle name as reported by the institution.	Char.	35
131	165	Student Last Name	Student's last name as reported by the institution.	Char.	35
166	173	Student Date of Birth	Student's date of birth as reported by the institution.	Char.	8
175	175	Excluded - In School Indicator	Indicator used to note that the student was excluded from the calculation due to being enrolled at an institution according to NSLDS.	Char.	1
176	176	Excluded - In Military Indicator	Indicator used to note that the student was excluded from the calculation due to receiving a military-related deferment according to NSLDS.	Char.	1
177	177	Excluded - Death or Disabled Indicator	Indicator used to note that the student was excluded from the calculation due to receiving a loan discharge due to death or disability according to NSLDS.	Char.	1
178	178	Excluded - Completed Higher Credential Program	Indicator used to note that the student was excluded from the calculation due to having completed a higher credentialed program following the completion of the lower credentialed program noted in this file.	Char.	1

GE Completers List Viewer Tool

The data in the Current Program GE Records section is pulled from the Program GE Record (Record type – 15)

SSN 011-00-0030			Name TRAIL, FIRST8210, D			Date of Birth 1912-06-16				
Current Program GE Records										
Cip Code, Cred Lvl, Stuld	Qual Term	Higher Cred	Reported Under OPEID,Cip,CredLvl	Begin Date	End Date	Private Debt Amt	Institutional Debt Amt	Tuition And Fees	Allowance Books,Supply	
110901,02,00AAD	2	N		2010-10-04	2012-06-22	0	0	22670	2025	

Pos FR	Pos TO	Data Element	Description	Field Format	Lth
13	18	CIP Code	Classification of Instructional Program (CIP) code for the educational program for which the Debt Measures were calculated.	Char.	6
19	20	Credential Level	Level of degree/certificate/credential for the GE Program.	Char.	2
34	38	Student ID	Unique alpha numeric field used to identify a specific student in a specific program's calculation.	Char.	5
65	72	Program Attendance Begin Date	The Program Attendance Begin Date provided in the GE Record.	Char.	8
81	88	Program Attendance Status Date	The Program Attendance Status Date provided in the GE Record.	Char.	8
90	95	Private Loans Amount	The Private Loans Amount provided in the GE Record.	Num.	6
96	101	Institutional Debt	The Institutional Debt provided in the GE Record.	Num.	6
102	110	Title IV Loan Amount	This field populated with a zeros in the GE Completers List file. Will be populated with data in the GE Debt Measures Backup Data file.	Num.	9
111	116	Tuition and Fees Amount	The Tuition and Fees Amount provided in the GE Record.	Num.	6
143	148	Allowance for Books, Supplies, and Equipment	Amount of allowance included in cost of attendance (COA) for books, supplies, and equipment for the student for enrolling in and attending the GE program.	Num.	6

GE Completers List Viewer Tool

- The Jump view option allows the user to select a student by entering the CIP code, Credential Level and Student ID (CipCode,CL,StuId)
- The CipCode,CL,StuId combination is found in the Current Program GE Records box

SSN 011-00-0030			Name TRAIL, FIRST8210, D			Date of Birth 1912-06-16				
Current Program GE Records										
Cip Code, Cred Lvl, Stuld	Qual Term	Higher Cred	Reported Under OPEID,Cip,CredLvl	Begin Date	End Date	Private Debt Amt	Institutional Debt Amt	Tuition And Fees	Allowance Books,Supply	
110901,02,00AAD	2	N		2010-10-04	2012-06-22	0	0	22670	2025	

Note: CipCode,CL,StuId can be copied by using 'Ctrl+C'

GE Completers List Viewer Tool

User viewing another program can see data for student 'Trail, First8210, D' by entering 110901,02,00AAD in Jump field. (Can paste copied values using 'Ctrl+V')

Jump:

Programs (count=32)

Cip Code	Cred Level	Program Name	Eval Term	Start Year	End Year	Borrow Count	2yr Count	
110103	03	Information Technology.	4yr	2009	2012	22	16	▲
110901	02	Computer Systems Networking and Telecommunications.	2yr	2011	2012	42	42	≡
220301	01	Legal Administrative Assistant/Secretary.	4yr	2009	2012	6	3	
220302	01	Legal Assistant/Paralegal.	2yr	2011	2012	39	39	
220302	02	Legal Assistant/Paralegal.	2yr	2011	2012	70	70	
220302	03	Legal Assistant/Paralegal.	4yr	2009	2012	27	21	
310507	01	Physical Fitness Technician.	4yr	2009	2012	3	1	▼

Students (count=49)

SSN	Name (Last, First, Middle)	Date of Birth	In School	In Military	Disabled	Dead	Higher Cred	Qual Term	
011-00-0130	BICE, FIRST8311, M	1932-06-25	N	N	N	N	N	4yr	▲
041-00-0113	ROBEY, FIRST6693, L	1934-11-05	N	N	N	N	N	2yr	≡
061-00-0135	SACKS, FIRST8816	1913-02-06	N	N	N	N	N	2yr	
091-00-0118	GABLE, FIRST7198, J	1936-11-26	N	N	N	N	N	2yr	
111-00-0140	BECK, FIRST9321, D	1934-12-31	N	N	N	N	N	2yr	
141-00-0123	ELBON, FIRST7604, L	1925-09-22	N	N	N	N	N	2yr	
161-00-0145	LOCKE, FIRST9826, M	1936-05-08	N	N	N	N	N	2yr	
171-00-0106	HOBBS, FIRST5986, R	1936-05-15	N	N	N	N	N	4yr	▼

GE Completers List Viewer Tool

After entering the data in the Jump field, the student will appear highlighted with associated detail records.

Jump:

Programs (count=32)

Cip Code	Cred Level	Program Name	Eval Term	Start Year	End Year	Borrow Count	2yr Count
110103	03	Information Technology.	4yr	2009	2012	22	16
110901	02	Computer Systems Networking and Telecommunications.	2yr	2011	2012	42	42
220301	01	Legal Administrative Assistant/Secretary.	4yr	2009	2012	6	3
220302	01	Legal Assistant/Paralegal.	2yr	2011	2012	39	39
220302	02	Legal Assistant/Paralegal.	2yr	2011	2012	70	70
220302	03	Legal Assistant/Paralegal.	4yr	2009	2012	27	21
310507	01	Physical Fitness Technician.	4yr	2009	2012	3	1

Students (count=69)

SSN	Name (Last, First, Middle)	Date of Birth	In School	In Military	Disabled	Dead	Higher Cred	Qual Term
001-00-0060	SHARP, FIRST2240, P	1934-06-10	Y	N	N	N	Y	2yr
011-00-0030	TRAIL, FIRST8210, D	1912-06-16	N	N	N	N	N	2yr
021-00-0091	BRATT, FIRST4471, J	1933-10-09	N	N	N	N	Y	2yr
031-00-0052	BEANE, FIRST0532, A	1917-01-17	Y	N	N	N	N	2yr
051-00-0074	HOARD, FIRST2754, M	1924-11-25	Y	N	N	N	Y	2yr
061-00-0035	NEALE II, FIRST8715, E	1933-06-03	Y	N	N	Y	N	2yr
081-00-0057	CRANK, FIRST1037, A	1929-01-28	Y	N	N	N	N	2yr
101-00-0079	EWART, FIRST3259	1926-04-13	N	N	N	N	N	2yr

SSN 011-00-0030 Name TRAIL, FIRST8210, D Date of Birth 1912-06-16

Current Program GE Records

Cip Code, Cred Lvl, Stuld	Qual Term	Higher Cred	Reported Under OPEID, Cip, CredLvl	Begin Date	End Date	Private Debt Amt	Institutional Debt Amt	Tuition And Fees	Allowance Books, Supply
110901,02,00AAD	2	N		2010-10-04	2012-06-22	0	0	22670	2025

GE Completers List Viewer Tool

- Filter Options

1. CIP
2. Credential Level
3. Program
 - Evaluation Term
 - Maximum Borrower Count

4. Completers List Exclusions

- In School
- In Military (Loan in Military Deferment or Military Grace)
- Disabled
- Death
- Higher Credential Level
- Outside Program Evaluation Term

The screenshot shows the NSLDS GE Completers List Viewer - School 067899 NORTH SOUTH UNIVERSITY. The interface includes a menu bar (File, Options, Help), a 'Program' button, and a 'Switch' button. A 'Filter' section contains a 'CIP Code' field (callout 1) and a 'Credential Level' dropdown menu (callout 2) with options: 01 - UNDERGRADUATE CERTIFICATE OR DIPLOMA PROGRAM, 02 - ASSOCIATE'S DEGREE, 03 - BACHELOR'S DEGREE, and 05 - MASTER'S DEGREE. Below this is a 'Program' section with an 'Evaluation Term' dropdown (callout 3) and a 'Max Borrower Count' field. The 'Completer List Exclusions' section (callout 4) includes a 'Results match' radio button group (Any selected, All unselected) and six checkboxes: 'In School', 'Disabled', 'Higher Cred Level', 'In Military', 'Dead', and 'Outside Program Eval Term'. At the bottom, there is a 'Filter None' button and a 'Sort' dropdown menu set to 'SSN'.

GE Completers List Viewer Tool

Filtering to view only the students with an In School exclusion.

NSLDS GE Completers List Viewer - School 067899 NORTH SOUTH UNIVERSITY

File Options Help

Program/Student Switch

Filter

Term [v] Borrower Count [v]

Completer List Exclusions

Results match ☒ Any ☐ All

In School ☒ Yes ☐ Disabled ☐ Higher Cred Level ☐

In Military ☐ Dead ☐ Outside Program Eval Term ☐

Filter In School=Yes Sort SSN [v]

Jump: [v]

SSN	Name (Last, First, Middle)	Date of Birth	In School	In Military	Disabled	Dead	Higher Cred	Qual Term
051-00-0174	CADLE, FIRST2855, C	1929-07-18	Y	N	N	N	N	2yr
091-00-0218	DEEL, FIRST7299, M	1932-01-25	Y	N	N	N	N	2yr
131-00-0162	RUDD, FIRST1643, S	1916-06-06	Y	N	N	N	Y	2yr
161-00-0245	AKERS, FIRST9927, E	1929-10-18	Y	N	N	N	N	2yr
231-00-0172	DODGE, FIRST2653, A	1938-06-28	Y	N	N	N	N	2yr
301-00-0199	CHEEK, FIRST5380	1937-08-18	Y	N	N	N	N	4yr
391-00-0248	AVERY, FIRST0330, L	1913-09-26	Y	N	N	N	N	2yr
401-00-0209	LEEII, FIRST6390, J	1929-03-26	Y	N	N	N	Y	4yr

GE Completers List Viewer Tool

- In School Exclusion Types
 - In School Exclusion based on Enrollment
 - In School Exclusion based on Loans
 - In School Exclusion based on GE Attendance

SSN 161-00-0245		Name AKERS, FIRST9927, E		Date of Birth 1929-10-18					
Current Program GE Records									
Cip Code, Cred Lvl, Stuld	Qual Term	Higher Cred	Reported Under OPEID, Cip, CredLvl	Begin Date	End Date	Private Debt Amt	Institutional Debt Amt	Tuition And Fees	Allowance Books, Supply
220302,02,00ADY	2	N		2010-04-05	2012-03-23	0	0	44130	4320
In School Exclusion based on Enrollment									
OPEID	School Name	Status	Effective Date	Certification Date					
067899	NORTH SOUTH UNIVERSITY	Full Time	2014-01-06	2014-09-29					
In School Exclusion based on Loan(s)									
OPEID	Loan Date	Loan Type	ISL	Holder(s)	Data Provider ID/ Award ID	Loan Status Date	Loan Status	Deferment Start Date	Defer Type
06789900	2010-04-12	D1	A	579	161000245S10G04642001	2014-01-06	DA	2014-01-06	FT
06789900	2010-04-12	D2	B	579	161000245U10G04642001	2014-01-06	DA	2014-01-06	FT
06789900	2011-04-15	D1	A	579	161000245S12G04642002	2014-01-06	DA	2014-01-06	FT
06789900	2011-04-15	D2	A	579	161000245U12G04642001	2014-01-06	DA	2014-01-06	FT
06789900	2011-09-08	D1	C	579	161000245S12G04642001	2014-01-06	DA	2014-01-06	FT
In School Exclusion based on GE Attendance									
OPEID	School Name	Cip Code	Cred Level	Begin Date	End Date				
067899	NORTH SOUTH UNIVERSITY	220302	03	2014-01-06	2014-06-11				
Loan Holder Contact Information									
Code	Name	Address	Phone Email						
		P.O. BOX 69184							

GE Completers List Viewer Tool

- In School Exclusion based on Enrollment
 - Program Student Enrollment in Earnings Year Record (Record type – 40)
- In School Exclusion based on Loans
 - Program Student Deferment in Earnings Year Record (Record type – 45)
- In School Exclusion based on GE Attendance
 - Program Student in GE Attendance Earnings Year Record (Record type – 50)

– *NOTE: Earnings year is calendar year 2014*

GE Completers List Viewer Tool

- In Military Exclusions
 - Based on Loan(s) in Military Deferment or Military Grace status
 - Program Student Deferment in Earnings Year Record (Record type – 45)
 - Using Deferment Type Reason Code field
 - *NOTE: Earnings year is calendar year 2014*

SSN 781-00-1227			Name STAMPER, FIRST9119, A			Date of Birth 1937-10-02			
Current Program GE Records									
Cip Code, Cred Lvl, Stuld	Qual Term	Higher Cred	Reported Under OPEID,Cip,CredLvl	Begin Date	End Date	Private Debt Amt	Institutional Debt Amt	Tuition And Fees	Allowance Books,Supply
513501,01,00ACZ	2	N		2009-07-20	2011-06-24	0	0	30645	3600
In Military based on Loan(s)									
OPEID	Loan Date	Loan Type	ISL	Holder(s)	Data Provider ID/ Award ID	Loan Status Date	Loan Status	Deferment Start Date	Defer Type
06789900	2010-04-12	D1	A	581	781001227S10G04642001	2012-08-24	DA	2012-08-24	MO
06789900	2010-04-12	D2	A	581	781001227U10G04642001	2012-08-24	DA	2012-08-24	MO
06789900	2011-01-10	D1	A	581	781001227S11G04642001	2012-08-24	DA	2012-08-24	MO
06789900	2011-01-10	D2	A	581	781001227U11G04642001	2012-08-24	DA	2012-08-24	MO
06789900	2012-01-17	D1	A	581	781001227S12G04642001	2013-09-29	DA	2013-09-29	MR

GE Completers List Viewer Tool

- Death Exclusions
 - Death Exclusion based on Loan(s)
 - Program Student Deferment in Earnings Year Record (Record type – 45)
 - Using Loan Status field

SSN 671-00-0856			Name HAWSE, FIRST1744, R			Date of Birth 1922-10-23			
Current Program GE Records									
Cip Code, Cred Lvl, Stuld	Qual Term	Higher Cred	Reported Under OPEID,Cip,CredLvl	Begin Date	End Date	Private Debt Amt	Institutional Debt Amt	Tuition And Fees	Allowance Books,Supply
510801,02,00AHL	2	N		2008-07-01	2010-12-23	0	0	27845	2955
Death Exclusion based on Loan(s)									
OPEID	Loan Date	Loan Type	ISL	Holder(s)	Data Provider ID/ Award ID	Loan Status Date	Loan Status		
06789900	2010-04-12	D1	A	556	671000856S10G04642001	2015-08-13	DD		
06789900	2010-04-12	D2	A	556	671000856U10G04642001	2015-08-13	DD		
06789901	2008-10-03	SF	A	556	671000856108004642201	2015-08-13	DD		
06789901	2008-10-03	SU	A	556	671000856208004642202	2015-08-13	DD		
06789901	2009-03-05	SF	A	755 830694 700057		2014-07-18	DE		

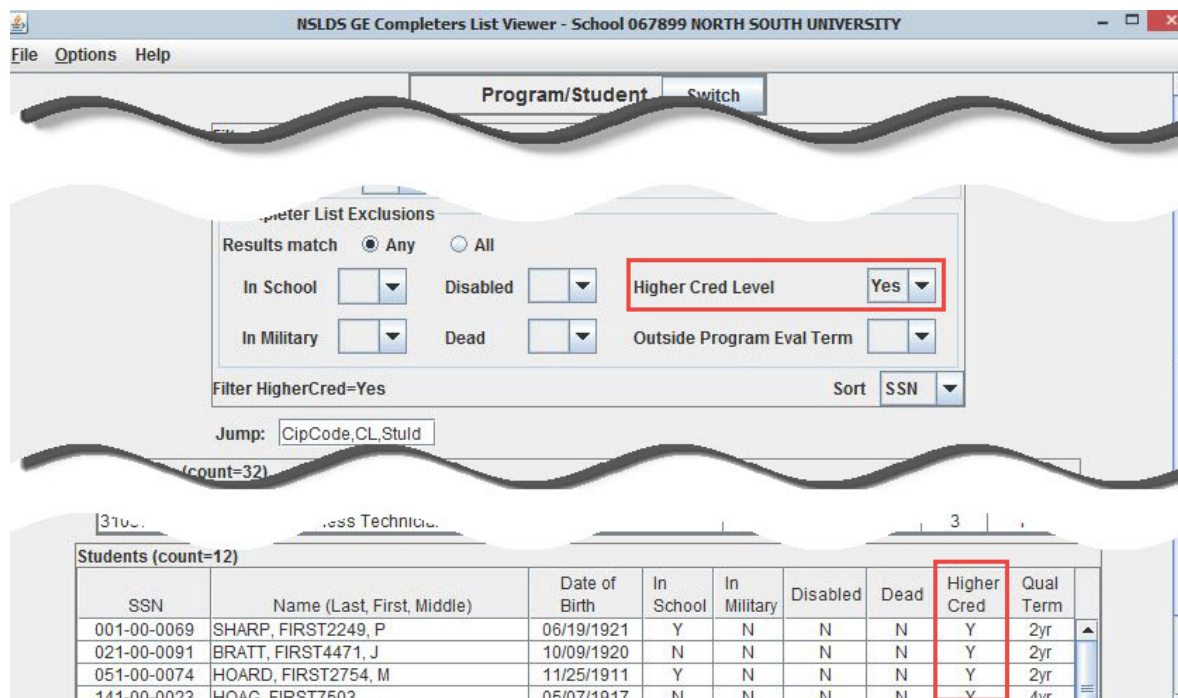
GE Completers List Viewer Tool

- Disability Exclusions
 - Based on Title IV Loan(s)
 - Program Student Deferment in Earnings Year Record (Record type – 45)
 - Using Loan Status field

SSN 231-00-0572		Name POOLE, FIRST3057, A				Date of Birth 1906-10-01				
Current Program GE Records										
Cip Code, Cred Lvl, Stuld	Qual Term	Higher Cred	Reported Under OPEID,Cip,CredLvl	Begin Date	End Date	Private Debt Amt	Institutional Debt Amt	Tuition And Fees	Allowance Books,Supply	
510716,02,00ABV	4	N		2007-04-02	2009-12-25	4546	0	27450	2376	
Disabled Exclusion based on Loan(s)										
OPEID	Loan Date	Loan Type	ISL	Holder(s)	Data Provider ID/ Award ID	Loan Status Date	Loan Status			
06789900	2005-01-05	SF	A	582	231000572105004642502	2014-03-27	DI			
06789900	2005-01-05	SU	A	582	231000572205004642502	2014-03-27	DI			
06789900	2005-08-18	SF	A	582	231000572105004642501	2014-03-27	DI			
06789900	2005-08-18	SU	A	582	231000572205004642501	2014-03-27	DI			
06789900	2006-08-23	SF	A	582	231000572106004642501	2014-03-27	DI			

GE Completers List Viewer Tool

- Higher Credential Level Completion – Students excluded due to subsequent completion of higher credential GE program at same institution
- Completion of higher credential must be in same academic classification (i.e. undergraduate lower credential GE and then undergraduate higher credential GE OR graduate lower credential GE and then graduate higher credential GE)



NSLDS GE Completers List Viewer - School 067899 NORTH SOUTH UNIVERSITY

File Options Help

Program/Student Switch

Completer List Exclusions

Results match ☒ Any ☐ All

In School Disabled Higher Cred Level

In Military Dead Outside Program Eval Term

Filter HigherCred=Yes Sort SSN

Jump: CipCode,CL,Stuld

(count=32)

Students (count=12)

SSN	Name (Last, First, Middle)	Date of Birth	In School	In Military	Disabled	Dead	Higher Cred	Qual Term
001-00-0069	SHARP, FIRST2249, P	06/19/1921	Y	N	N	N	Y	2yr
021-00-0091	BRATT, FIRST4471, J	10/09/1920	N	N	N	N	Y	2yr
051-00-0074	HOARD, FIRST2754, M	11/25/1911	Y	N	N	N	Y	2yr
141-00-0023	HOAG, FIRST7503	05/07/1917	N	N	N	N	Y	4yr

GE Completers List Viewer Tool

- Outside Program Evaluation Term – Programs with 90 or less students have some students evaluated in the 4 year period but are not used in the calculation

Completer List Exclusions

Results match ☒ Any ☐ All

In School Disabled Higher Cred Level

In Military Dead Outside Program Eval Term **Yes**

Filter OutsideProgEvalTerm=Yes Sort SSN

Jump: CipCode,CL,Stuld

Programs (count=32)

Cip Code	Cred Level	Program Name	Eval Term	Start Year	End Year	Borrow Count	2yr Count
110103	03	Information Technology.	4yr	2009	2012	22	16
110901	02	Computer Systems Networking and Telecommunications.	2yr	2011	2012	42	42
220301	01	Legal Administrative Assistant/Secretary.	4yr	2009	2012	6	3
220302	01	Legal Assistant/Paralegal.	2yr	2011	2012	39	39
220302	02	Legal Assistant/Paralegal.	2yr	2011	2012	70	70
220302	03	Legal Assistant/Paralegal.	4yr	2009	2012	27	21
310507	01	Physical Fitness Technician.	4yr	2009	2012	3	1

Students (count=12)

SSN	Name (Last, First, Middle)	Date of Birth	In School	In Military	Disabled	Dead	Higher Cred	Qual Term
111-00-0040	SHALL, FIRST9220, T	1939-01-07	N	N	N	N	N	4yr
131-00-0062	EVANS, FIRST1542	1927-01-13	N	N	N	N	N	4yr
141-00-0023	HOAG, FIRST7503	1930-05-07	N	N	N	N	Y	4yr
151-00-0084	GRASS, FIRST3764	1939-06-03	N	N	N	N	N	4yr
291-00-0038	BEALL, FIRST9018, L	1916-05-25	N	N	N	N	N	4yr
321-00-0021	BRADY, FIRST7301, R	1936-11-19	N	N	N	N	Y	4yr
361-00-0065	SEARS, FIRST1845, L	1931-11-30	N	N	N	N	N	4yr
411-00-0070	CLARY, FIRST2350, J	1934-06-03	N	N	N	N	Y	4yr

Submitting GE Completers List Corrections

Corrections

For additional information regarding the process for institutions to submit data corrections to the Draft GE Completers List using the NSLDS Professional Access Web site please attend the *Submitting GE Completers List Corrections* webinar

- When: June 14, 2016 and June 16, 2016
- Time: 1:30 PM Eastern Standard Time (both dates)

QUESTIONS?



Gainful Employment Information Page:

<http://www.ifap.ed.gov/GainfulEmploymentInfo/indexV2.html>

NSLDS Contact Information

Customer Support Center:

- Phone: 1-800-999-8219
- Toll: 785-838-2141
- Fax: 785-838-2154
- Web: www.nsldsfa.gov
- E-mail: nslds@ed.gov