



SFA to the Internet



NASHVILLE

NASFAA 2001

JULY 22-25

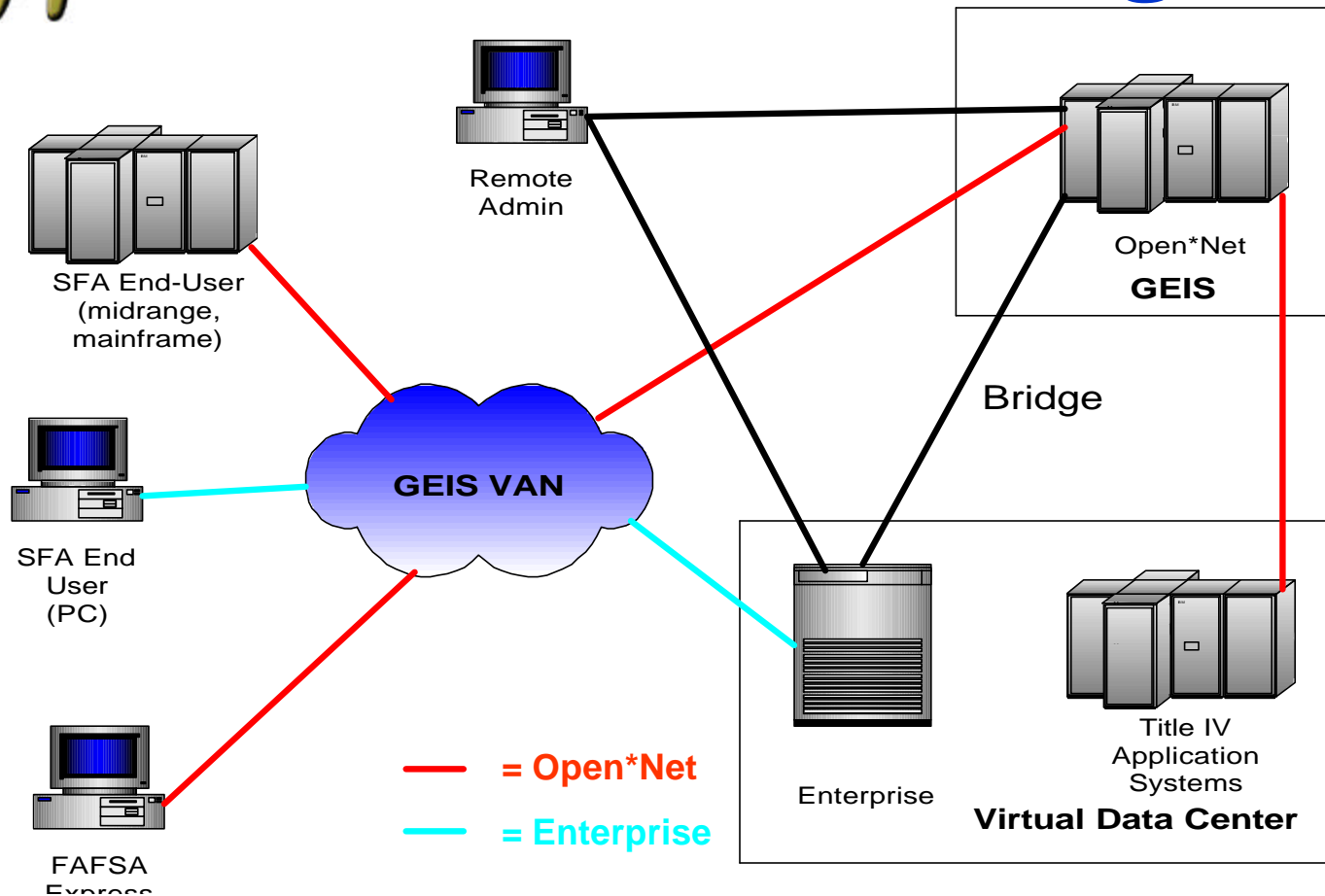


Current State

- Two store and forward systems
 1. Open*Net (approximately 150 non-PC users, including Title IV Application Systems)
 2. Enterprise (PC users, approximately 7,000)
- Redundant functionality
 - GEIS data center (Open*Net)
 - VDC data center (Enterprise)
- Proprietary solution
- Proprietary network charges



Current State Diagram





Why move to the Internet?

- Exchanging files via the Internet will eliminate proprietary transmission costs
- Consolidates multiple store and forward systems into one entity
- Utilizes a COTS solution



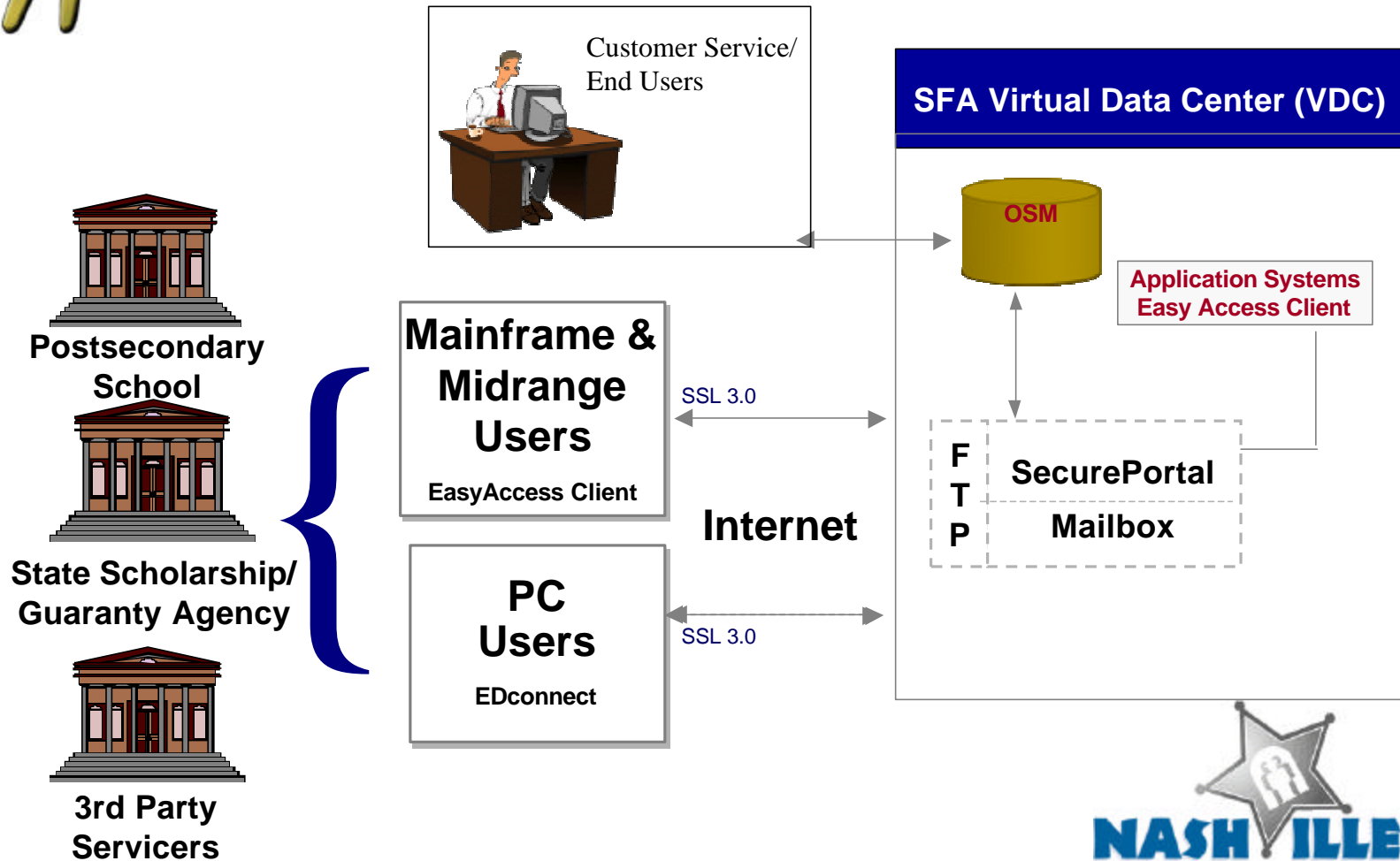
What's the Solution...

SFA to the Internet

- One store and forward system
- Mainframe, Midrange, and PC platforms supported
- Secure TCP/IP-based FTP file transfers over Internet
- Supports current business processes



SFA to the Internet Solution





Three Components

1. *SecurePortal* – Store and forward mailboxing system.
2. *Online Secure Manager (OSM)* - Administrative system for mailbox management and administrative duties
3. *EasyAccess* - Client software used to send and receive data.



SecurePortal

- Mailboxing system located at the VDC
- Users will retain current TG identifier
- Default password will be set to PASSWORD (all upper case) and you will be asked to change it during your first transmission.



Online Secure Manager

- Accessible via Internet Explorer
- Monitors sent and received files
- Provides filter and sort capabilities
- Supports advanced search options
- Users can restore files that have been downloaded within the last ten days





Secure Manager Cafe - Microsoft Internet Explorer provided by NCS IC IT Services

File Edit View Favorites Tools Help

Back Forward Stop Refresh Home Search Favorites History Mail Print Edit

Address <http://4.20.17.223:8100/saigportal/login.jsp> Go Links

 **Student Aid Internet Gateway** 

It is July 06, 2001 14:42 GMT [Home](#)

Login

Username:

Password:

Login

Note: This site is best viewed in IE 5.0 in 24 bit True Color and 1024 x 768 resolution.

Internet



Secure Manager Cafe - Microsoft Internet Explorer provided by NCS IC IT Services

File Edit View Favorites Tools Help

Back Forward Stop Refresh Home Search Favorites History Mail Print Edit

Address http://4.20.17.223:8100/saigportal/participant.jsp Go Links

Student Aid Internet Gateway

powered by Trade.com

Welcome ARMSTRONG ATLANTIC STA TG50017 It is Jul 6, 2001 14:54 GMT

Welcome Participants Relationships Messages Alias Support Help Logout

SEARCH

Show All

GO

Advanced Expand

Record(s) Retrieved : 1

Name	Organization	EDI Name
ARMSTRONG ATLANTIC STA TG50017	SAIG	TG50017

PARTICIPANTS

Name: ARMSTRONG ATLANTIC STA TG50017 User Logon/Mailbox: TG50017

EDI Name: TG50017 EDI Qualifier: * ALL QUAL

Password: Verify Password:

Connection: NCSportalDEV HTTP URL:

Approval Code: 0123456789ABCDEF Approval Status: Approved

Save

Contact Enabling Security Tech Contact Account

Organization: SAIG Title:

Department: AUTUMN SCHWARTZE Email: PRI_TEST_EMAIL@NCS.COM

Phone: 912-921-7498-EXT1111

Address1: 11935 ABERCORN STREET Address2: TEST SECOND ADDRESS

City/State: SAVANNAH GA Postal Code: 31419-1997

Country: United States

Internet



Secure Manager Cafe - Microsoft Internet Explorer provided by NCS IC IT Services

File Edit View Favorites Tools Help

Back Forward Stop Refresh Home Search Favorites History Mail Print Edit

Address <http://4.20.17.223:8100/saigportal/message.jsp> Go Links

Student Aid Internet Gateway

Welcome ARMSTRONG ATLANTIC STA TG50017 It is July 06, 2001 14:56 GMT

Welcome Participants Relationships Messages Alias Support Help Logout

SEARCH

Show All

Record(s) Retrieved : 94

Sender Mailbox	Receiver Mailbox	Date Received
TG51330	TG50017	2001-07-03 19:52:13.0
r TG50002	TG50017	2001-06-23 17:46:11.0
r TG50002	TG50017	2001-06-21 19:27:51.0
s TG50017	TG50042	2001-06-20 21:34:48.0
s TG50017	TG50042	2001-06-20 21:34:48.0
s TG50017	TG50042	2001-06-20 21:34:47.0
s TG50017	TG50042	2001-06-20 21:34:47.0
s TG50017	TG50042	2001-06-20 21:34:47.0
s TG50017	TG50042	2001-06-20 21:34:47.0
s TG50017	TG50042	2001-06-20 21:34:47.0
s TG50017	TG50042	2001-06-20 21:34:47.0
s TG50017	TG50042	2001-06-20 21:34:47.0

MESSAGES

From Mailbox: TG51330 Date/Time Received: 2001-07-03 19:52:13.0

To Mailbox: TG50017 Status: DLVD-TO-MAILBOX

Msg Class: EAPS01OP Msg Type: NON EDI

Interchange Sender: Interchange Date/Time:

Interchange Receiver: Interchange Control No:

Message Info Interchange Interconnect Error Detail Error Info Message Text

Original From: TG51330 Date/Time avail. in Mailbox: 2001-07-03 19:52:33.0

Original To: TG50017 Date/Time Picked up:

Unique Filename: 04489184155233026581 Date/Time Of Interchange:

Interchange Size: 3673 Date/Time Purged:

Log ID: 16385 Log Type: Received

Internet



EasyAccess

- PC users - EasyAccess will be integrated into the EDconnect Internet release v5.0
- Non-PC users will need to install the Easy Access product and update JCL or scripts
- The Host Communication Guide for Mainframe and Midrange Users is posted on <http://SFADownload.ed.gov>
- The EasyAccess Command Line Guide and Customization Guide are also posted on SFA Download Web Site



Supported Platforms

PC

- Internet connection that supports TCP/IP
- Operating Systems:
 - Windows 95
 - WIN98
 - WinNT 4.0
 - Windows 2000 Professional



Supported Platforms

Mainframe/Midrange

- OS/390 MVS/ESA
- OS/400 4.2+ (Compiler Level 3.7)
- AIX 4.2+
- Digital UNIX 4.0 (DEC UNIX)
- DEC Open VMS 7.1
- HPUNIX 10.01+
- SCO UNIX 4.3+
- Sun Solaris 2.6+



Security of the Data

- Utilizes Secure Sockets Layer (SSL 3.0) as encryption solution for securing privacy of transmitted Title IV data
- Encryption and data protection solution is used throughout the majority of eBusiness, eCommerce, and eGovernment applications
- UserID and password authentication will be required to gain access to your mailbox



How do I prepare?

- Verify your Internet Service Provider supports:
 - ◆ TCP/IP (stack)
 - ◆ FTP (file transfer protocol)
 - ◆ Successful connections to the Internet
 - ◆ Test access - Download files from <http://SFADownload.ed.gov>
- Ensure your authentication identifiers are current on SAIG Enrollment web site
<http://SFAWebEnroll.ed.gov>
 - ◆ Social Security Number
 - ◆ Date of Birth
 - ◆ Mother's Maiden Name



Migration Step by Step

- Download EDconnect Internet release version 5.0 or EasyAccess from SFADownload Web Site <http://SFADownload.ed.gov>
- Install the software.
- Perform software setup, indicating TG ID and Internet Service Provider information.
- Execute initial password change and transmission test.
- Continue testing until comfortable with transmission process.



Migration Step by Step (Cont'd)

- Go to SAIG Enrollment web site.
<http://SFAWebEnroll.ed.gov> Click “Migrate to Student Aid Internet Gateway (SAIG)” icon.
- 7. Review displayed text explaining the impending migration. Confirm your intent to migrate to SAIG.
- Receive on-screen confirmation message from SFA.
- Begin sending/receiving data via the Internet.



What about NSLDS online customers?

- **IF:** you currently request reports from the NSLDS web site, your reports will be sent to your TIVWAN mailbox.
- **THEN:** You will need to migrate that mailbox to the SAIG in order to receive those reports.



What about my current business processes?

- Default directory for EDconnect software **C:\IAM\DATA** will remain unchanged in new Internet version of EDconnect
- Option to modify download path and specify any directory you choose
- Functionality for automatically loading exported files from EDExpress into EDconnect still available



What about my old software?

- Old version of EDconnect will not be overwritten or automatically deleted when installing new software
- Do at least one more transmission to clean out old mailbox
- Keep old software in case you need to restore data or use online query
- Remove old software after December 18, 2001



Transition Strategy

- Identify “Early Adopters” who will migrate prior to the entire user community
- Target high-volume users to work through migration issues and increase savings for SFA
- Customer service hours during the migration will be 7am – 7pm Central Time
- Users can arrange for off-hours support with migration specialists



Who are Early Adopters?

- Destination Points who will migrate early to the production environment
- Work with Customer Service to identify and resolve issues before large scale rollout to the users at large
- To volunteer as an early adopter, contact CPS/WAN Technical Support at (800) 330-5947, or via email at cpswan@ncs.com



Migration Key Dates

- **August 16, 2001**
Early Adopters begin migration
- **August 31, 2001**
SFA User Migration – full implementation
- **September 28, 2001**
Anticipate 1,000 users migrated milestone
- **December 18, 2001**
Migration complete, TIV WAN ceases operation

Note: Mailboxes that have not migrated by December 18, will be automatically converted over to the new system.



Incentive to Migrate

- **Modernization Partners will award 3 trips to 2001 Electronic Access Conferences**
- **One winner will be drawn after:**
 - ◆ **September 15, 2001**
 - ◆ **September 30, 2001**
 - ◆ **October 15, 2001**
- **Prize includes pre-paid flight from your regional airport to the next scheduled conference, 3-night accommodations at the conference hotel, and a per diem for 4 days**
- **Migrate early and better your chances to win!**





Communication Vehicles

- **SFATech Web site**
(www.ed.gov/offices/OSFAP/sfatech)
- **IFAP Web site** (www.ifap.ed.gov)
- **SFA Portal** (sfa4schools.sfa.ed.gov)
- **NASFAA Web site** (www.nasfaa.org)
- **NCHelp Web site** (www.nchelp.org)
- **E-mails to SFATECH listserv**
- **Network messages (Pmessages)**
- **NASFAA Conference**
- **Electronic Access Conferences (EACs)**



Advisory Group Thank You!

- **University of Texas – Austin**
- **Boston University**
- **Colorado State University**
- **New York University**
- **WI-Indianhead Tech**
- **Plymouth State College**
- **Chemekata Community College**
- **University of Florida**
- **University of Houston – Downtown**
- **University of Michigan – Ann Arbor**
- **Gonzalez Management**
- **Sinte Gleska University**
- **Texas Southern University**



Questions?

Keith.Wilson@ed.gov

Brad_Burnett@ncs.com