



# **Electronic Access Conference** **2000 GET CONNECTED**



We Help Put America  
Through School

## Student Financial Assistance

---

## ***Session 15***

# ***FAFSA on the Web - Onward and Upward!***

# *Introduction*

- Who is this session geared for?
- Evaluations
- Questions

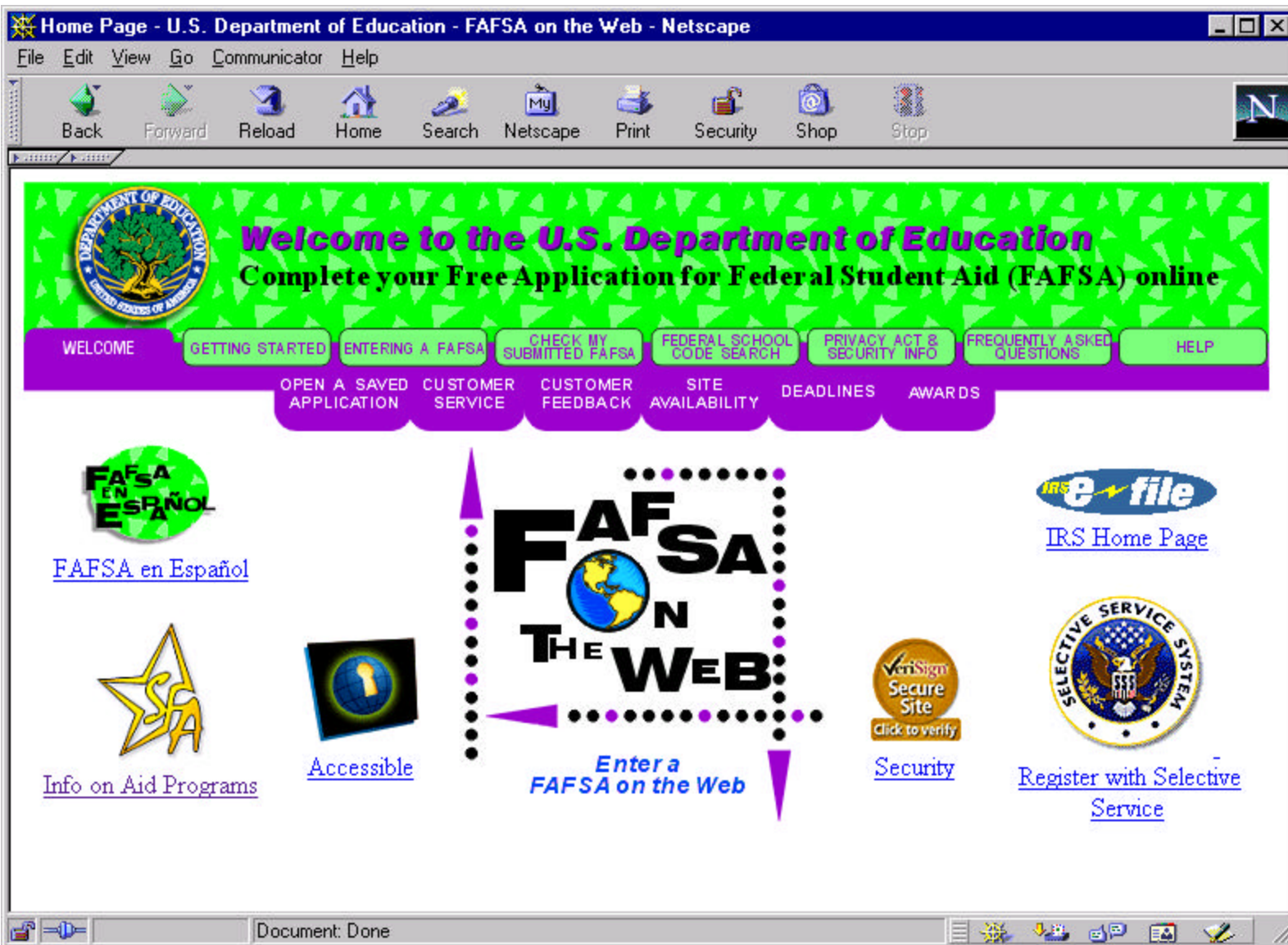
## *Session Overview*

This session will preview the new FOTW and COTW applications students will be seeing as of January 1, 2001. It will key on the major changes and newly added enhancements. At the end we will show the tentative plans for the CPS-FAA Access Online.



# ***The FOTW Format***

- The format has been completely redesigned
- Simpler look and feel
  - ‘Tabs’
  - More use of graphical icons



Entering a FAFSA Online - U.S. Department of Education - FAFSA on the Web - Netscape

File Edit View Go Communicator Help

WELCOME GETTING STARTED ENTERING A FAFSA CHECK MY SUBMITTED FAFSA FEDERAL SCHOOL CODE SEARCH PRIVACY ACT & SECURITY INFO FREQUENTLY ASKED QUESTIONS HELP

FILL OUT A FAFSA MAKE CORRECTIONS REQUEST DUPLICATE STUDENT AID REPORT QUESTION 28/35 WORKSHEET ELECTRONICALLY SIGN MY FAFSA OTHER ELECTRONIC OPTIONS

### Entering a FAFSA



[Fill Out a FAFSA](#)  
To start your FAFSA on the Web application, including Renewals.



[Make Corrections](#)  
If you want to make Corrections to your FAFSA.



[Request a Duplicate Student Aid Report](#)  
If you've lost your Student Aid Report (SAR) or just need another copy sent to you, request a duplicate here.



[Question 28/35 Worksheet](#)  
The Question 28/35 Worksheet helps you determine whether a federal law suspending federal aid to those convicted of possession or sales of drugs (not including alcohol and tobacco) affects you. Question 28 applies to 2000-2001. Question 35 applies to 2001-2002.



[Electronically Sign My FAFSA](#)  
If you've already submitted your application, you can sign your FAFSA application electronically. You must have a U.S. Department of Education PIN.



[Other Electronic Options](#)  
There's more than just FAFSA on the Web for filling your FAFSA electronically (even though FAFSA on the Web is the quickest and best method!)

[Go Back](#) **HOME PAGE**

[Customer Service](#) | [Frequently Asked Questions](#)

Document: Done

## ***What's new with the FOTW forms?***

- Interview version eliminated
- Form-based version 'blended' with the Interview version
- Embedded Worksheets A, B, and C
  - reduced chance of errors
- Embedded a household size worksheet



Step Two: 2000 Income and Assests for Student (and Spouse) - FAFSA on the Web - U.S. Department of E - Netscape

File Edit View Go Communicator Help

Introduction

1. Personal Info

2. Financial Info

3. Dependency Status

4. Parents' Info

5. Household Info

6. Schools


7. Final Check/Review

8. Signatures

9. Print

10. Submit

11. Finish



You can use these steps to jump to sections you've already completed.

Step Two questions relate to your (and your spouse's) income and tax information for the 2000 fiscal year. You do not have to have filed your Income Tax Return Form before filling out this application. However, if you have already completed your 2000 tax form, it will help you complete this section much more accurately and quickly. Other documents that will help you are your 2000 W-2 forms, and other financial records you have for 2000. Select this link if you want to find out what [documentation/materials](#) are needed to successfully complete this step of the application.

36. For 2000, have you (the student) completed your IRS income tax return or another tax return? (If you will not file a 2000 IRS tax return, questions 37-41 will be skipped.)


Select

PreviousNext

ExitApp SummaryHelpSave

[Customer Service](#) | [Frequently Asked Questions](#)

Document: Done



## *...there's more...*

- Command Button placement redesigned to be consistent across all form pages
- Progress Bar replaced with Progress Graphic at left side of screen
- Progress Graphic can be used for navigation to any section already entered
- Progress Graphic shows progress from Introduction to the Confirmation Page





Step Four: 2000 Parental Information - FAFSA on the Web - U.S. Department of Education. - Netscape

File Edit View Go Communicator Help

Enter whole dollar amounts in financial fields, and do not use commas.

73. What was your parents' adjusted gross income for 2000? (See IRS Form 1040-line 33; 1040A-line 19; 1040EZ-line 4; or Telefile-line I.) If your parents have not yet completed their 2000 taxes, select the Income Estimator button and answer the questions on the worksheet that is displayed.

**Income Estimator**

74. Enter the total amount of your parents' income tax for 2000: (See IRS Form 1040-line 51; 1040A-line 33; 1040EZ-line 10; or Telefile-line K.)

75. Enter your parents' exemptions for 2000: (See IRS Form 1040-line 6d; 1040A-line 6d; [1040EZ or Telefile - see online help.](#))

**Introduction**

**1. Personal Info**

**2. Financial Info**

**3. Dependency Status**

**4. Parents' Info**

**5. Household Info**

**6. Schools**


**7. Final Check/Review**

**8. Signatures**

**9. Print**

**10. Submit**

**11. Finish**



You can use these steps to jump to sections you've already completed.

**Previous** **Next**

**Exit** **App Summary** **Help** **Save**

[Customer Service](#) | [Frequently Asked Questions](#)

Document: Done

***...and more...***

- Application Summary command button added to forms
  - allows the student to view entered data in its entirety *during* entry
  - navigate to questions already entered



U.S. Department of Education - FAFSA on the Web - Netscape

File Edit View Go Communicator Help

### Application Summary Report

To view this page, move your browser's vertical scroll bar upward or downward, or press the **Page Up** or **Page Down** keys on the right side of your computer keyboard.

2001 - 2002 APPLICATION SUMMARY REPORT  
DO NOT PRINT THIS DOCUMENT.  
THIS REPORT IS FOR REVIEW PURPOSES ONLY. YOU'LL BE ABLE TO  
PRINT A COPY OF YOUR DATA LATER.

---

Fields that have been verified are marked with a '#' (pound) sign.  
Assumed fields, based on the data you entered, are marked with a  
'\*' (asterisk) sign.

Student ID 212121212 STUDENT

**Step 1. (Q1 - Q35)**

<u>Last Name</u>	STUDENT
<u>First Name, Middle Initial</u>	IAM A
<u>Permanent Street Address</u>	123 MAIN ST.
<u>City</u>	IOWA CITY
<u>State Abbreviation, ZIP Code</u>	IA 52240
<u>Social Security Number</u>	212121212
<u>Date of Birth</u>	12/12/1973
<u>Permanent Home Phone Number</u>	1234567890
<u>Driver's License Number</u>	123456789ABCDEFGHIJK
<u>Driver's License State Abbreviation</u>	IA
<u>Citizenship Status</u>	YES, I AM A U.S. CITIZEN
<u>Alien Registration Number</u>	
<u>Marital Status</u>	I AM SINGLE, DIVORCED, OR WIDOWED
<u>Date of Marital Status</u>	
<u>Summer Term 2001</u>	FULL TIME/NOT SURE
<u>Fall Term 2001</u>	FULL TIME/NOT SURE
<u>Winter Term 2001-2002</u>	FULL TIME/NOT SURE
<u>Spring Term 2002</u>	FULL TIME/NOT SURE
<u>Summer Term 2002</u>	FULL TIME/NOT SURE
<u>Father's Education Level</u>	COLLEGE OR BEYOND

Document: Done

*...even more still!*

- Federal School Code search enhanced
  - ‘worksheet’ format
  - displays a list of selected schools
  - ‘City’ added to search criteria

FAFSA on the Web 2000-2001 - Netscape

File Edit View Go Communicator Help

80% Complete

### Step Six: Student's School Information - Continued

88.

[College Code:](#)  [College Name:](#)

89. [Housing Plans:](#)

90.

[College Code:](#)  [College Name:](#)

91. [Housing Plans:](#)

[Customer Service](#) | [Frequently Asked Questions](#)

Document: Done

**Federal School Code Search - U.S. Department of Education - FAFSA on the Web - Netscape**

File Edit View Go Communicator Help

Which college(s) would you like to receive your 2001-2002 application information? If you are not sure where you will go to college, take your best guess.

If you already know your school's Federal School Code, enter that code in the college code box. When you select the **Next** button, we will check that code with our database to make sure it is valid.

College Code:

If you don't know your school's Federal School Code, select the **Search** button and follow the instructions for finding the Federal School Code of your choice.

**6. Schools**

**Introduction**

**1. Personal Info**

**2. Financial Info**

**3. Dependency Status**

**4. Parents' Info**

**5. Household Info**


**7. Final Check/Review**

**8. Signatures**

**9. Print**

**10. Submit**

**11. Finish**



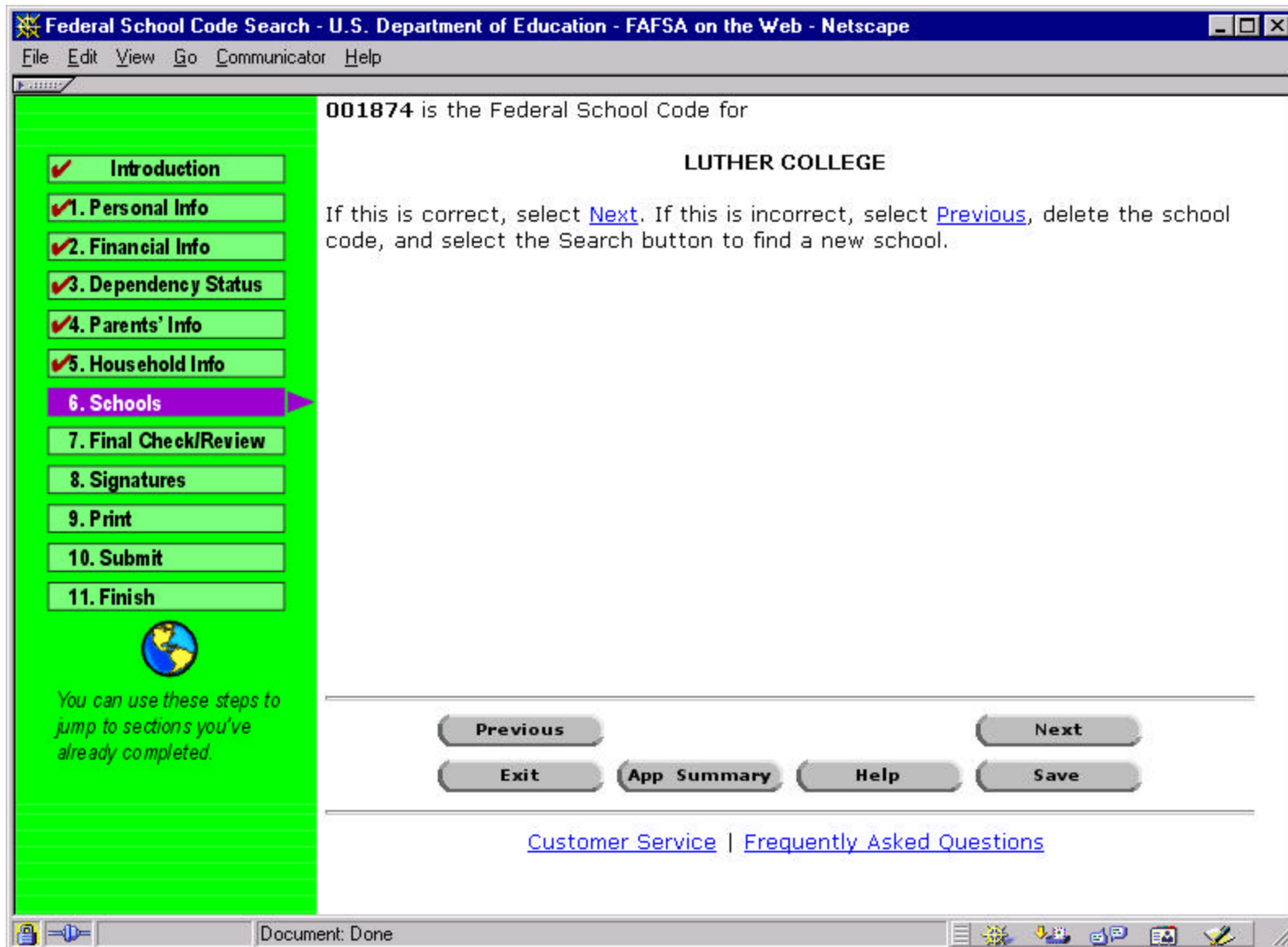
*You can use these steps to jump to sections you've already completed.*

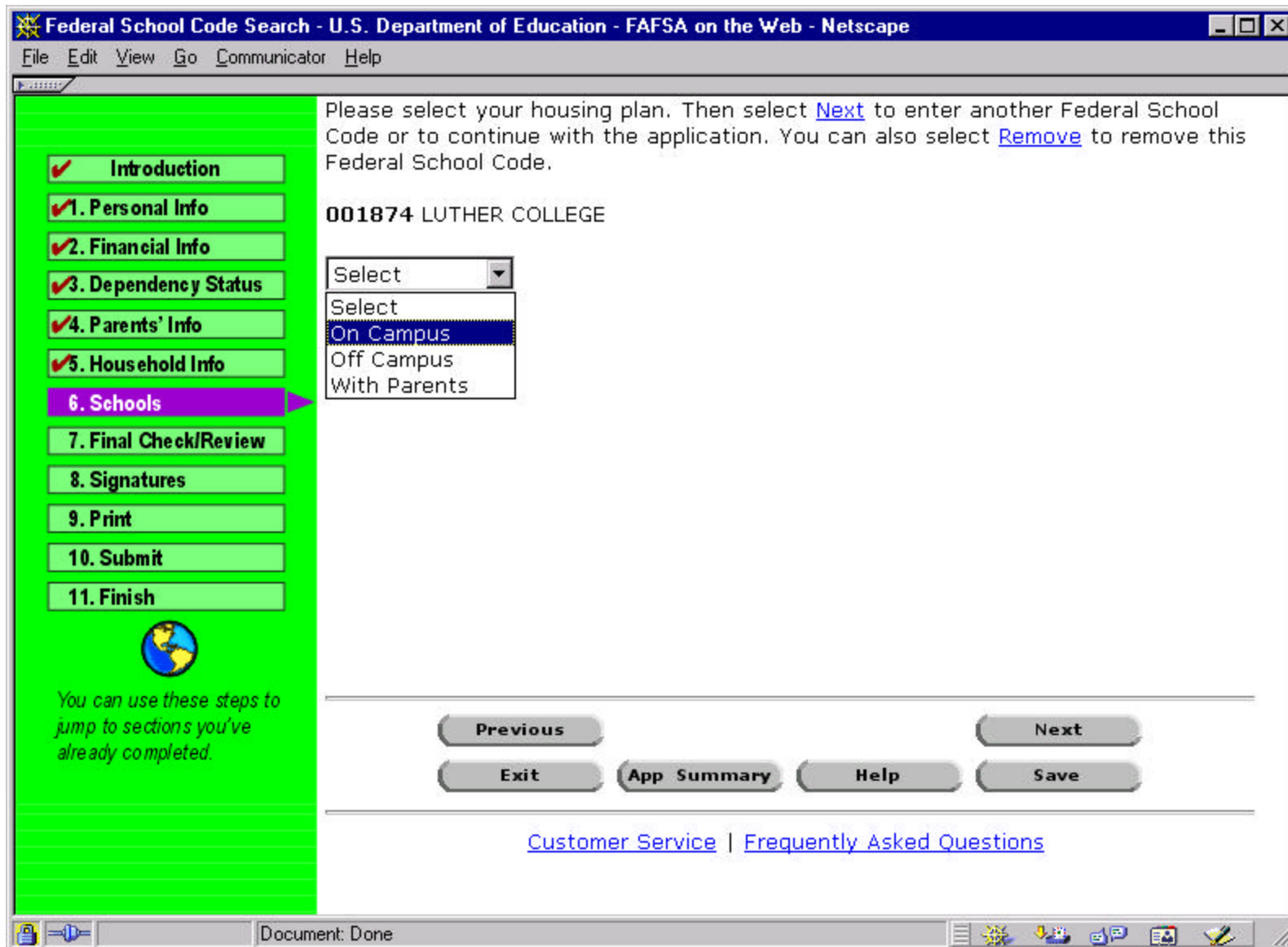
**Previous** **Search** **Next**

**Exit** **App Summary** **Help** **Save**

[Customer Service](#) | [Frequently Asked Questions](#)

Document: Done





- 



You have selected the following Federal School Codes and associated housing codes. If you want to add a Federal School Code and associated housing code, select the **Add School** button. If you want to edit a Federal School Code and its associated housing code, select **Edit**.

Note: You must have at least one Federal School Code entered; you may have up to six.

School Code	Name of College	Housing Plan
86. 001874	LUTHER COLLEGE	87. On Campus <a href="#">Edit</a>
88.	<input type="button" value="Add School"/>	89.
90.		91.
92.		93.
94.		95.
96.		97.

[Previous](#)

**Next**

Exit

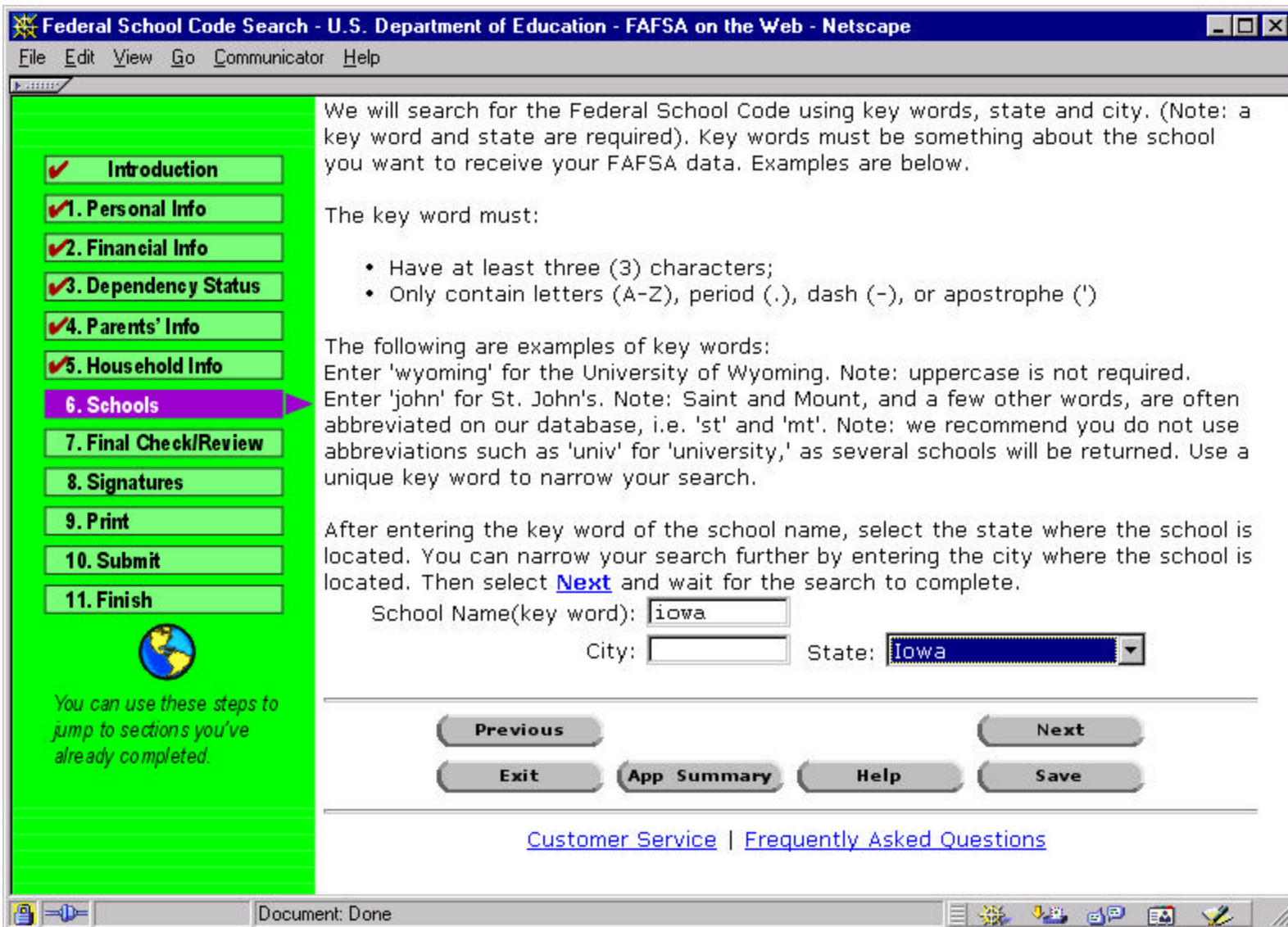
## App Summary

**Help**

Save

[Customer Service](#) | [Frequently Asked Questions](#)







**Federal School Code Search - U.S. Department of Education - FAFSA on the Web - Netscape**


File Edit View Go Communicator Help

**Results of College Search For iowa in IA**  
*Found 29 matches on your search.*

Select the highlighted school code below to select the school you want to receive your FAFSA information. If you do not find the name of the school you wanted, select [Previous](#) and try revising your search.

**004075** EASTERN IOWA COMMUNITY COLLEGE DIST  
**001861** IOWA CENTRAL COMMUNITY COLLEGE  
**004597** IOWA CENTRAL COMMUNITY COLLEGE  
**001864** IOWA LAKES COMMUNITY COLLEGE  
**006267** IOWA METHODIST SCHOOL OF RADIOLOGY  
**G23069** IOWA SCHOOL OF BEAUTY  
**G23309** IOWA SCHOOL OF BEAUTY  
**016306** IOWA SCHOOL OF BEAUTY  
**016513** IOWA SCHOOL OF BEAUTY  
**015139** IOWA SCHOOL OF BEAUTY INC  
**G08260** IOWA SCHOOL OF BEAUTY INC.  
**G01869** IOWA STATE UNIVERSITY  
**001869** IOWA STATE UNIVERSITY  
**001871** IOWA WESLEYAN COLLEGE  
**001851** IOWA WESTERN CMTY CLG-CLARINDA  
**004598** IOWA WESTERN CMTY CLG-COUNCIL BLUFF  
**G01877** NORTH IOWA AREA COMMUNITY COLLEGE  
**001877** NORTH IOWA AREA COMMUNITY COLLEGE  
**E00772** NORTHEAST IOWA COMMUNITY COLLEGE  
**G04587** NORTHEAST IOWA COMMUNITY COLLEGE  
**004587** NORTHEAST IOWA COMMUNITY COLLEGE  
**012634** NORTHEAST IOWA COMMUNITY COLLEGE  
**004600** NORTHWEST IOWA COMMUNITY COLLEGE  
**G01892** UNIVERSITY OF IOWA  
**001892** UNIVERSITY OF IOWA

**Introduction**  
**1. Personal Info**  
**2. Financial Info**  
**3. Dependency Status**  
**4. Parents' Info**  
**5. Household Info**  
**6. Schools**  
**7. Final Check/Review**  
**8. Signatures**  
**9. Print**  
**10. Submit**  
**11. Finish**

  
*You can use these steps to jump to sections you've already completed.*

Document: Done

- ✓ Introduction
- ✓ 1. Personal Info
- ✓ 2. Financial Info
- ✓ 3. Dependency Status
- ✓ 4. Parents' Info
- ✓ 5. Household Info
6. Schools
7. Final Check/Review
8. Signatures
9. Print
10. Submit
11. Finish



You can use these steps to jump to sections you've already completed.

You have selected the following Federal School Codes and associated housing codes. If you want to add a Federal School Code and associated housing code, select the **Add School** button. If you want to edit a Federal School Code and its associated housing code, select **Edit**.

Note: You must have at least one Federal School Code entered; you may have up to six.

School Code	Name of College	Housing Plan
86. 001874	LUTHER COLLEGE	87. On Campus <a href="#">Edit</a>
88. 001892	UNIVERSITY OF IOWA	89. <a href="#">Edit</a>
90.	<div>Add School</div>	91.
92.		93.
94.		95.
96.		97.

## Previous

**Next**

Exit

## App Summary

**Help**

Save

[Customer Service](#) | [Frequently Asked Questions](#)

## *...en Español?*

- Spanish version of the FOTW added including:
  - Signature page
  - Help Text

Primer Paso: Usted (el Estudiante) - Falsa en la Web en Español - Departamento de Educación de - Microsoft Internet Explorer

File Edit View Favorites Tools Help Links >>

✓ Introducción

**1. Info. Personal**

2. Info. Financiera

3. Estado de Dependencia

4. Info. de los Padres

5. Info. del Hogar

6. Universidades


7. Verificación Final/Revisión

8. Firmas

9. Imprimir

10. Transmitir

11. Concluir



*Usted puede utilizar estos pasos para regresar a las secciones que ya haya terminado.*

9. Su fecha de nacimiento:  
(Esta no se puede proporcionar esta información en esta casilla.)

01/19/1976

10. Su número de teléfono permanente:  
(Por favor, proporcione el código de área de su teléfono seguido de los números, sin paréntesis o guiones. Por ejemplo 2025551212).

11. Número de licencia de conducir:

12. Estado de la licencia de conducir:

Anterior

Salir

Resumen

Ayuda

Siguiente

Guardar

[Apoyo al Usuario](#) | [Preguntas Frecuentes](#)

Internet

Cuarto Paso: Información de los Padres del año 2000 - Falsa en la Web en Español - Departamento - Microsoft Internet Explorer

File Edit View Favorites Tools Help Links »

**Llene las cantidades en los campos financieros con cifras enteras de dólar, y no utilice comas.**

**73. ¿Cuál fue el ingreso bruto ajustado de sus padres en el año 2000?**   
(Vea el Formulario del IRS 1040- renglón 33; 1040A- renglón 19; 1040EZ- renglón 4; o Telefile-renglón I).

Si sus padres todavía no han presentado su declaración para el año 2000, oprima el botón de cálculo de ingreso, y conteste a las preguntas de la hoja de cálculo que aparezcan.

**Hoja de Cálculo de Ingreso**

**74. Proporcione la cantidad total del impuesto sobre el ingreso de sus padres en el año 2000:**   
(Vea el Formulario del IRS 1040-renglón 51; 1040A-renglón 33; 1040EZ-renglón 10; o Telefile-renglón K).

**75. Proporcione el número de exenciones de sus padres del año 2000:**   
(Vea el Formulario del IRS 1040-renglón 6d; 1040A- renglón 6d; para el formulario [1040EZ o Telefile - vea la ayuda en línea](#)).

**Anterior** **Siguiente**  
**Salir** **Resumen** **Ayuda** **Guardar**

Usted puede utilizar estos pasos para regresar a las secciones que ya haya terminado.

Done Internet

# ***Making Corrections***

- Corrections on the Web redesigned as a “shopping cart” approach
  - Student selects only those data elements to be corrected
  - Eliminates the need to page through the entire form
  - Especially benefits those students correcting only a few items





2001-2002 FAFSA Corrections on the Web - FAFSA on the Web - U.S. Department of Education - Netscape

File Edit View Go Communicator Help

---

2001-2002 FAFSA Corrections ON THE WEB

### FAFSA Corrections on the Web Shopping Cart

---

Welcome to FAFSA Corrections on the Web.

How to make corrections:

1. Review your current information below
2. Select the questions to be corrected, and then select the "Next" button at the bottom of the screen
3. Correct your information, using the "Next" button to move from question to question
4. When you are done correcting your information, select the "Run Check" button at the bottom of the screen

For [further details](#) select this link.

---

Fields where we have assumed a value are marked with an '\*' (asterisk) sign.  
 Fields you previously verified are marked with a '#' (pound) sign.

100106085 FL 01

#### Step 1. (Q1 - Q35)

1. Last Name:	Student	<input type="checkbox"/>
2. First Name:	Iam	<input type="checkbox"/>
3. Middle Name:	A	<input type="checkbox"/>
4. Permanent Street Address:	123 Main St.	<input checked="" type="checkbox"/>
5. City:	Sometown	<input type="checkbox"/>
6. State:	IA	<input type="checkbox"/>
7. Zip Code:	20816	<input type="checkbox"/>
8. Social Security Number:	100106085	<input type="checkbox"/>
<small>(Data can only be verified for this field)</small>		
9. Date of Birth:	01/01/1985	<input type="checkbox"/>
<small>(Data can only be verified for this field)</small>		
10. Permanent Home Phone Number:		<input type="checkbox"/>

Document: Done


2001-2002 FAFSA Corrections on the Web - FAFSA on the Web - U.S. Department of Education - Netscape

File Edit View Go Communicator Help

---

2001-2002

**FAFSA**  
Corrections

 **ON THE WEB**

---

4. Permanent Street Address:

(Only use letters (A-Z), numbers (0-9), periods (.), commas (,), apostrophes ('), dashes (-), number symbols (#), at symbols (@), percent symbols (%), ampersands (&), slashes (/), or blanks (spaces). No other characters are allowed. Use street address abbreviations such as APT (apartment) or AVE (avenue) if the address extends beyond the space provided.)

5. City:

6. State:

7. ZIP Code:

---

Previous

Next

Exit

Help


Save

---

[Customer Service](#) | [Frequently Asked Questions](#)

---

Document: Done





# ***Saving the Application***

- New and Improved Save Process
  - With entry of the User ID and self selected password, the student can save the application to a temporary database
  - Application is retained on the database for 45 days from last date it was accessed

## *...Saving (cont.)*

- If a saved application already exists, we'll ask if the student wants to continue with their saved application
- Saved application is deleted from the database once it's submitted

2001-2002 FAFSA on the Web - FAFSA on the Web - U.S. Department of Education. - Netscape

File Edit View Go Communicator Help

Form Approved  
OMB No. 1845-0001  
App. Exp. 6/30/02

### Login Information

We will automatically save your application data to our secure database. To do so we need the following information. Once this information is entered, you will not be able to change it within the application. If you've entered this information incorrectly, you will need to begin a new application.

**You must remember your password** to retrieve your saved application. Select [Help](#) for more information about saving.

What is your Social Security Number?  
Please enter this number without the dashes. For example, 123456789.

001010001

What is your Date of Birth?  
Please enter this date in "mm/dd/19yy" format, including the '/' (slashes). For example, 08/17/1975.

12/12/1980

What are the first two (2) letters of your last name?

te

Enter password (4-8 characters):  
How to choose a [password](#).

\*\*\*\*

Re-enter password:

\*\*\*\*

The save process may take a few moments. Please do not reload the page.

Exit

Help

Submit

[Customer Service](#) | [Frequently Asked Questions](#)

Document: Done

# ***New Signature Options***

- Student PIN Signature collected BEFORE form entry
  - Student's signature is sent with the application record
  - We'll check for a Renewal FOTW

Electronic Signature Form - U.S. Department of Education - FAFSA on the Web - Netscape

File Edit View Go Communicator Help

## Using a PIN to Electronically Sign your Application

**Introduction**

1. Personal Info
2. Financial Info
3. Dependency Status
4. Parents' Info
5. Household Info
6. Schools
7. Final Check/Review
8. Signatures
9. Print
10. Submit
11. Finish

 You can use these steps to jump to sections you've already completed.

If you have a PIN from the U.S. Department of Education, you can use it to electronically sign your application now. This is the fastest way to submit your application. See [electronically signing your application using your PIN](#) for more information.

If you do not have a PIN, you can apply for one at [www.pin.ed.gov](http://www.pin.ed.gov). However, it will take 7-10 days for your PIN to arrive in the mail. If there are student aid deadlines approaching, you should fill out this form now and print and submit a paper signature page at the end of this application rather than applying for a PIN.

Please note that anyone, including parents and students who have never applied for aid, can apply for a PIN at [www.pin.ed.gov](http://www.pin.ed.gov).

Do you want to sign your application now by using your PIN?

[Previous](#) [Help](#) [Next](#)

[Customer Service](#) | [Frequently Asked Questions](#)

**HOME PAGE**

Document: Done

U.S. Department of Education - FAFSA on the Web - Netscape

File Edit View Go Communicator Help

Enter 2001-2002 Renewal?

Our records show that you submitted a FAFSA in 2000-2001. If you like, you can submit a Renewal FAFSA for 2001-2002 instead of an original FAFSA.

- In a Renewal FAFSA, we pre-fill most of the application with your answers from last year.
- You only need to review the information and update anything that has changed since last year.
- We will not provide financial information from last year, however, so be sure you have your year 2000 financial records.
- Submitting a Renewal FAFSA is much faster and easier than submitting an original FAFSA.

Would you like to submit a renewal FAFSA for 2001-2002?

Select [Next](#) to continue.

Select

[Customer Service](#) | [Frequently Asked Questions](#)

**HOME PAGE**

Document: Done

2001-2002 Renewal FAFSA on the Web - FAFSA on the Web - U.S. Department of Education - Netscape

File Edit View Go Communicator Help

Introduction

1. Personal Info

2. Financial Info

3. Dependency Status

4. Parents' Info

5. Household Info

6. Schools


7. Final Check/Review

8. Signatures

9. Print

10. Submit

11. Finish




You can use these steps to jump to sections you've already completed.

Renewal FAFSA ON THE WEB

2001-2002

Welcome to the U.S. Department of Education's Renewal FAFSA on the Web Application



You may use this online form to complete and submit the Renewal Free Application for Federal Student Aid (FAFSA). You may complete and transmit this application electronically to apply for federal student aid.

Will you be using a [screen reader](#) to access this site? Select

Select [Next](#) to continue.

Previous


Help

Next

[Customer Service](#) | [Frequently Asked Questions](#)

HOME PAGE

Document: Done



## ***Post-Entry Changes***

- New End of Entry Edit display
- Student E-mail Address collection
- Redesigned signature submission pages
- New Document Print page
- Two separate pages for student and parent signature selections
- New Electronic Filing Instructions





## *End of Entry Edits*

- Displayed as a web page
  - easier to read
  - more interactive
- Answers can be corrected without returning to the application entry pages

U.S. Department of Education - FAFSA on the Web - Error Found - Netscape

File Edit View Go Communicator Help

2001-2002 FAFSA ON THE WEB

**Error Found**

» You reported that you were a legal resident of your state after 01/01/1996, but also reported a legal residence date before 01/01/1996. Please correct the answer to one of these questions.

25. Did you become a legal resident of this state before January 1, 1996?

26. If you answered "No" to question 25, give the date you became a legal resident:  
(Please enter this date in "mm" and "ccyy" format. For example, 12 and 1997.)

Month:  Year:

[Customer Service](#) | [Frequently Asked Questions](#)

Document: Done

## ***E-Mail Address***

- Student E-mail Address data element
  - ED will use e-mail address for electronic notification when the application is received and again when it's processed
  - 50 character field
  - included on the ISIR
  - displayed on the SAR, but not correctable
  - can correct/change via web or by calling PIC



E-mail Address - U.S. Department of Education - FAFSA on the Web - Netscape

File Edit View Go Communicator Help

Introduction

1. Personal Info

2. Financial Info

3. Dependency Status

4. Parents' Info

5. Household Info

6. Schools


7. Final Check/Review

8. Signatures

9. Print

10. Submit

11. Finish



You can use these steps to jump to sections you've already completed.

E-mail Address Entry

If you have an e-mail address and would like to be notified when your application has been received, enter your e-mail address now. You are not required to provide us with an e-mail address.

We will provide your e-mail address to any schools you listed in Step Six, to state student financial aid agencies in your state of legal residence, and to the state student financial aid agencies of the states in which the schools you listed in Step Six are located. See the [Privacy Act](#) for more information on the way we use the information you provide on this form.



The U.S. Department of Education does not send unsolicited e-mail, or "spam". We will not use or distribute your e-mail address for any purpose other than federal student financial aid.

Student E-mail Address:

PreviousNext

ExitApp SummaryHelpSave

[Customer Service](#) | [Frequently Asked Questions](#)

Document: Done

# *Signatures*

- Redesigned Signature submission pages
  - clearly show the difference between Student and Parent signature options
- Separate PIN instruction page for Parents
- Two separate signature pages for Student and Parent, as well as the combined signature page



Signature Process - U.S. Department of Education - FAFSA on the Web - Netscape

File Edit View Go Communicator Help

Introduction

1. Personal Info

2. Financial Info

3. Dependency Status

4. Parents' Info

5. Household Info

6. Schools

7. Final Check/Review


8. Signatures

9. Print

10. Submit

11. Finish

You can use these steps to jump to sections you've already completed.



### Signatures

You must sign your FAFSA.

- **Print Sig. Page** - You must have access to a printer from this computer to print a signature page, sign it, and mail it to us immediately after you have submitted your application.
- **No Print** - We will send you a Student Aid Report (SAR) in the mail that you must sign and return to us.
- **Electronically Sign** - You must have a PIN from the Department of Education

How do you want to sign your application?

**Printing does not submit your application!**

[Previous](#) [Next](#)

[Exit](#) [App Summary](#) [Help](#) [Save](#)

[Customer Service](#) | [Frequently Asked Questions](#)

Document: Done

Signature Process - U.S. Department of Education - FAFSA on the Web - Netscape

File Edit View Go Communicator Help

Introduction

1. Personal Info

2. Financial Info

3. Dependency Status

4. Parents' Info

5. Household Info

6. Schools


7. Final Check/Review

8. Signatures

9. Print

10. Submit

11. Finish



You can use these steps to jump to sections you've already completed.

## Signatures

We require one parent whose information is provided in Step Four to sign your FAFSA.

- **Print Sig. Page** - You must have access to a printer from this computer to print a signature page. Have your parent sign it, and mail it to us immediately after you have submitted your application.
- **No Print** - We will send you a Student Aid Report (SAR) in the mail that your parent must sign and return to us.
- **Electronically Sign** - Have your parent use a PIN to sign your application after you have submitted it to us. Choose this option only if your parent already has a PIN.

How do you want to submit your parent's signature?

Select

Select

Print Signature Page

No Print

Electronically Sign

**Printing does not submit your application!**

Previous

Next



Exit

App Summary

Help

Save

[Customer Service](#) | [Frequently Asked Questions](#)

 Document: Done 



Document Print - U.S. Department of Education - FAFSA on the Web - Netscape

File Edit View Go Communicator Help

✓ Introduction

✓ 1. Personal Info

✓ 2. Financial Info

✓ 3. Dependency Status

✓ 4. Parents' Info

✓ 5. Household Info

✓ 6. Schools


✓ 7. Final Check/Review

✓ 8. Signatures

9. Print

10. Submit

11. Finish



You can use these steps to jump to sections you've already completed.

Print the Following Documents

On the next few pages you will have the opportunity to print the following documents:


- Signature Page (you must print this)
- Application Print Report
- Electronic Filing Instructions

PreviousNext

ExitApp SummaryHelpSave

[Customer Service](#) | [Frequently Asked Questions](#)

Document: Done



Signature Page - U.S. Department of Education - FAFSA on the Web - Netscape

File Edit View Go Communicator Help

Previous Save Printing Help Next

To print this signature page, select **Print**. When you are finished, select [NEXT](#).

2001 - 2002 FAFSA on the WEB  
Signature Page  
Sign and mail this page NOW!

jeannie b sanders  
125 chenery st  
san fransisco CA 94131

F 001010001 sa

READ, SIGN AND DATE BELOW

By signing below, you agree, if asked, to provide information that will verify the accuracy of your completed form. This information may include a copy of your U.S. or state income tax form. If you purposely give false or misleading information, you may be fined \$10,000, sent to prison, or both. You also certify that:

- you will use any federal student aid funds received during the award year covered by this application solely for educational expenses related to attendance during that year at the institution of higher education that determined eligibility for those funds;
- you are not in default on a Title IV educational loan, or you have repaid or made satisfactory arrangements to repay your loan if you are in default;
- you do not owe an overpayment on a Title IV educational grant, or you have made satisfactory arrangements to repay that overpayment;
- you will notify your school if you do owe an overpayment or are in default; and
- you understand that the Secretary of Education has the authority to verify income reported on this application with the Internal Revenue Service.

EVERYONE WHOSE INFORMATION IS GIVEN ON THIS FORM SHOULD SIGN BELOW. THE STUDENT (AND ONE PARENT WHOSE INFORMATION IS PROVIDED IN STEP FOUR, IF PARENT INFORMATION IS GIVEN) MUST SIGN BELOW.

F 001010001 sa

Student \_\_\_\_\_ Parent \_\_\_\_\_

Date Signed \_\_\_\_\_

Be sure that you, the student, signed where indicated. If you gave your parent(s)' \_\_\_\_\_

After your application information is processed, you will receive a Student Aid \_\_\_\_\_

Document: Done

**Copy of Your Application Information - U.S. Department of Education - FAFSA on the Web - Netsca...**

File Edit View Go Communicator Help

Previous Save Printing Help Next

Print a copy of your FAFSA on the Web application **Print**

The document below is a COPY of your entered data. This is for your records only. Do NOT mail this page to the Department of Education. We will not return this copy to you.

To print this page, select [PRINT](#).

To save your application, select [SAVE](#). Saving will NOT submit your application.

To view this page, move your browser's vertical scroll bar upward or downward, or press the **Page Up** or **Page Down** key on the right side of your computer keyboard.

Select **NEXT** to continue.

COPY OF YOUR 2001-2002 APPLICATION INFORMATION

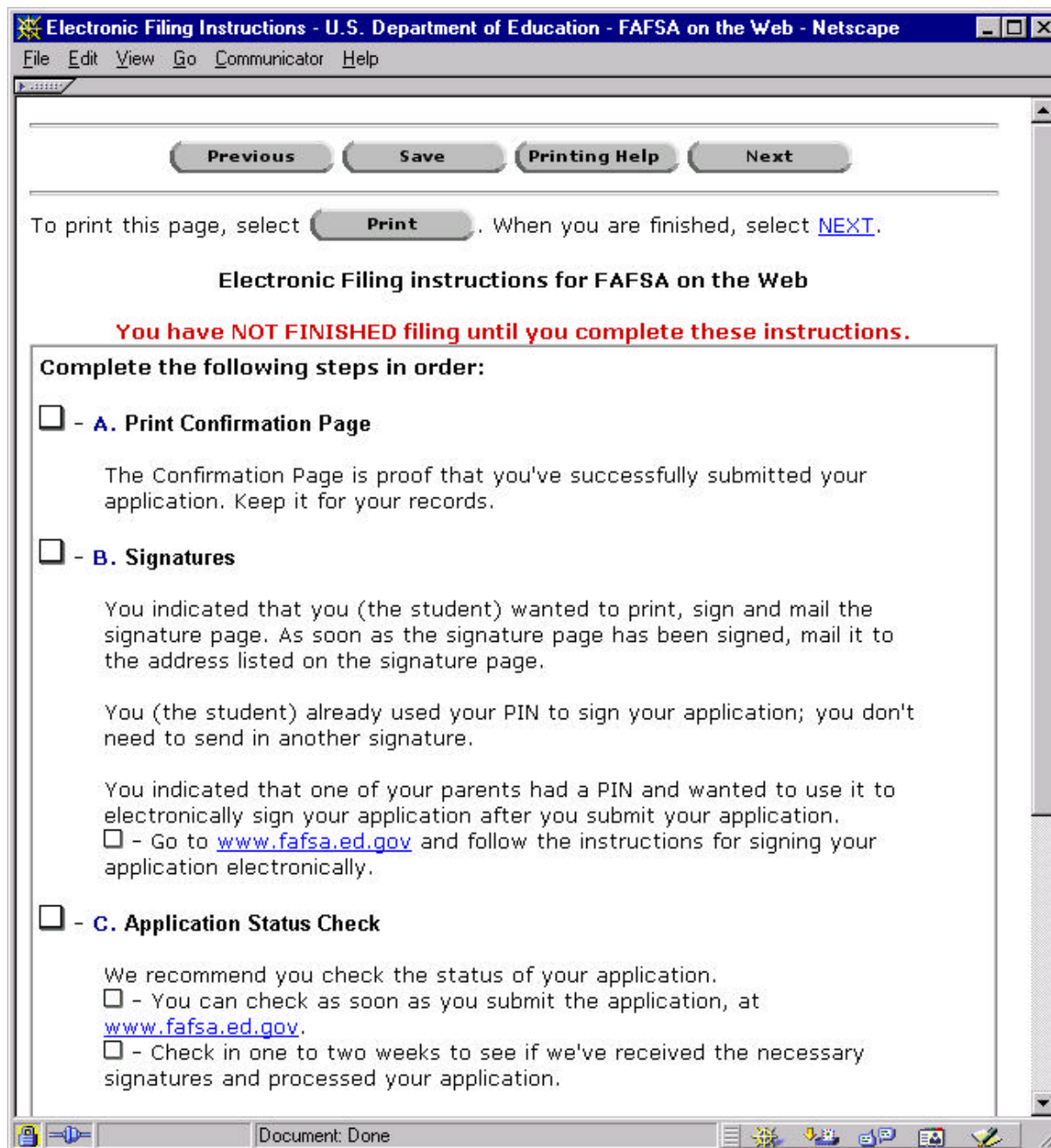
DO NOT MAIL THIS DOCUMENT OR A COPY OF THIS DOCUMENT TO THE U.S. DEPARTMENT OF EDUCATION.

THIS IS YOUR COPY OF YOUR APPLICATION DATA.

Fields that have been verified are marked with a '#' (pound) sign.  
Assumed fields, based on the data you entered, are marked with a '\*' (asterisk) sign.

Student ID	001010001 sanders
Step 1. (Q1 - Q35)	
Last Name	sanders
First Name, Middle Initial	jeannie b
Permanent Street Address	125 chenery st
City	san francisco
State Abbreviation, ZIP Code	CA 94131
Social Security Number	001010001
Date of Birth	12/12/1980
Permanent Home Phone Number	
Driver's License Number	
Driver's License State Abbreviation	
Citizenship Status	U.S. CITIZEN (OR U.S. NATIONAL)
Alien Registration Number	
Marital Status	SINGLE, DIVORCED, OR WIDOWED
Date of Marital Status	
Summer Term 2001	
Fall Term 2001	

Document: Done



Submitting Your Application - U.S. Department of Education - FAFSA on the Web - Netscape

File Edit View Go Communicator Help

Submitting Your Application

✓ Introduction

✓ 1. Personal Info

✓ 2. Financial Info

✓ 3. Dependency Status

✓ 4. Parents' Info

✓ 5. Household Info

✓ 6. Schools


✓ 7. Final Check/Review

✓ 8. Signatures

✓ 9. Print

10. Submit

11. Finish



You can use these steps to jump to sections you've already completed.

Have you printed your signature page? Your signature page should print all on one page. For your signature page to be processed, the following must be visible on the page:

- Heading showing the school year you are applying for
- Your Name
- Address
- Social Security Number
- Signature

If you have successfully printed your signature page, select [Submit my application now](#) to submit your application. When your application is successfully submitted, we'll return you a confirmation page with a unique confirmation number.

If you have not successfully printed your signature page, please do not submit your application from this page. Select [Previous](#) to print the signature page again.

Submit my application now

Previous

[Customer Service](#) | [Frequently Asked Questions](#)

Document: Done





## ***What about the rest of FOTW?***

- Up until now we've concentrated on the forms. There's so much more to the FOTW site...



## *Where's the App?*

- Application Status Checking enhanced to full Student Access Online
  - status can be viewed when the application is:
    - just submitted
    - on the Hold File waiting for signatures
    - sent to processing
    - processed

## *Application Status (cont.)*

- Once processed, with a PIN...
  - all applicant data can be viewed by specific transaction
  - view SAR comments
  - view NSLDS data
- Link directly to Corrections on the Web and/or Duplicate SAR Request without re-entering PIN information



Entering a FAFSA Online - U.S. Department of Education - FAFSA on the Web - Netscape

File Edit View Go Communicator Help

2001-2002  
**STUDENT ACCESS ON THE WEB**

TRANSACTIONS

Below is a list of the transactions we have for you at the Central Processing System (CPS) as of 07/26/2000. You can select any of the transaction numbers to view the complete details for that transaction.

Note that any applications or corrections that you have submitted recently will not appear here until they have been processed by the CPS.

Transaction Number	Processed Date	Expected Family Contribution (EFC)	Application Source
<a href="#">04</a>	07/26/2000	02455	Corrections on the Web
<a href="#">03</a>	07/15/2000	02000	Corrections on the Web
<a href="#">02</a>	06/26/2000	<a href="#">Date of Birth Mismatch</a>	Renewal on the Web
<a href="#">01</a>	06/12/2000	Not Calculated	FAFSA on the Web

[Help](#)

[Customer Service](#) | [Frequently Asked Questions](#)

Document: Done

Entering a FAFSA Online - U.S. Department of Education - FAFSA on the Web - Netscape

File Edit View Go Communicator Help

2001-2002

# STUDENT ACCESS ON THE WEB

TRANSACTIONS COMPUTED INFO YOU THE STUDENT INCOME/ASSETS PARENT INFO SCHOOL INFO NSLDS SAR COMMENTS PRINT SUMMARY

## Computed Information

Name: WWWWWW WWWWWW W. WWWWWW

Social Security Number: 123-45-6789

Date of Birth: 08/02/1966

E-Mail Address: WWWWWW

Date Application Completed: 01/10/2001

Application Receipt Date: 01/15/2001

Processed Date: 06/27/2001

Signed By: BOTH

Paid EFC: 02000

Preparer's Social Security Number: REPORTED

Preparer's EIN: REPORTED

Preparer's Signature: SIGNED

Make Corrections Help Request a Duplicate SAR

[Customer Service](#) | [Frequently Asked Questions](#)

Document: Done

Entering a FAFSA Online - U.S. Department of Education - FAFSA on the Web - Netscape

File Edit View Go Communicator Help

2001-2002

# STUDENT ACCESS ON THE WEB

TRANSACTIONS COMPUTED INFO YOU THE STUDENT INCOME/ ASSETS PARENT INFO SCHOOL INFO NSLDS SAR COMMENTS PRINT SUMMARY

[You the Student](#) | [State Residency](#) | [Driver's License](#) | [Marital Status/Your Family](#)  
[Enrollment Status](#) | [Degree Status](#) | [Interest in Student Aid](#) | [Parent's Education](#)

## You the Student

**Permanent Address:** 12345678901234567890123456789012345  
WWWXXXXXXXXXXXXXXXXXXXX, MD 12345

**Permanent Home Phone Number:** (301)555-1212

**DRN:** 1234

**Citizenship Status:** U.S. CITIZEN

**Alien Registration Number:** (BLANK)

**Are You Male:** YES

**If you are male, 18-25, not registered, do you want Selective Service to register you:** YES

[Make Corrections](#) [Help](#) [Request a Duplicate SAR](#)

[Customer Service](#) | [Frequently Asked Questions](#)

Document: Done

## ***Now for what you've all been waiting for...***

- **FAA Online!**
- **This new feature will combine the same functionality that the student has in the Student Access Online with access to**
  - **FAA Information**
  - **EFC Calculations**
  - **Flags**
  - **Comment Codes**



Entering a FAFSA Online - U.S. Department of Education - FAFSA on the Web - Netscape

File Edit View Go Communicator Help

---

2001-2002

FAA ACCESS ON THE WEB

Transactions

Computed Info

You the Student

Income/ Assets

Parent Info

School Info

NSLDS

SAR Comments

Reject Reasons

FAA Access

[Application Flags](#) | [EFC Values](#) | [Financial Aid Flags](#) | [Match Flags](#) | [Comment Codes](#)

## Application Flags

SAR C Flag:	C	Model:	I	Reprocessing Code:	X
Agency Source:	5	SysGen:	X	Reject Reasons:	X
Record Source Type:	R	Dependency Override:	X	Application Receipt Date:	01/01/2000
Record Type:	X	Early Analysis Flag:	X	Transaction Receipt Date:	12/12/2000
Verification Flag:	N	FAA Adjustment:	X	Subsequent Application Flag:	X

---

Help

---

[Customer Service](#) | [Frequently Asked Questions](#)

---

Document: Done



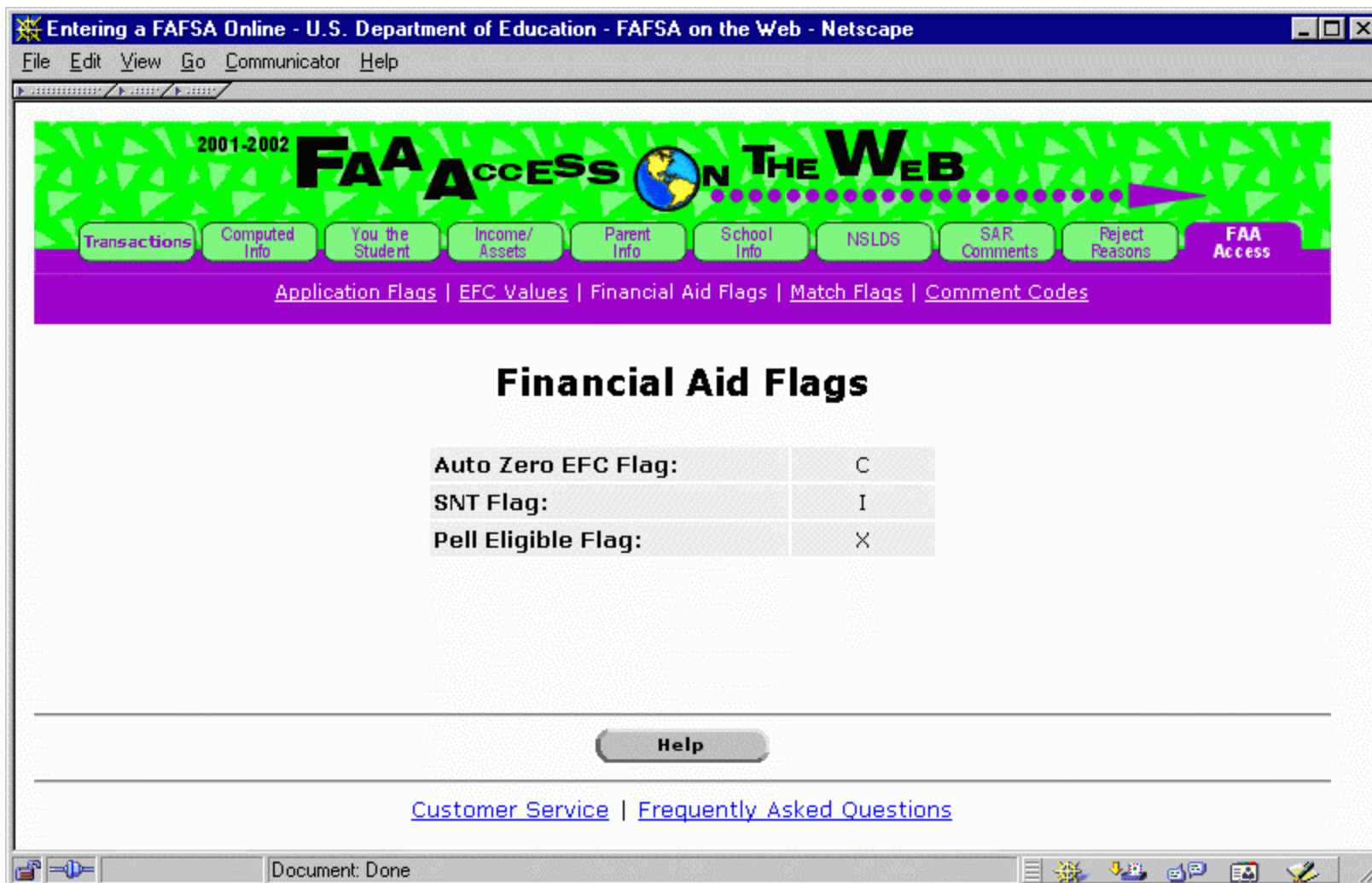
2001-2002 **FAA ACCESS ON THE WEB**  
[Transactions](#) | [Computed Info](#) | [You the Student](#) | [Income/Assets](#) | [Parent Info](#) | [School Info](#) | [NSLDS](#) | [SAR Comments](#) | [Reject Reasons](#) | **FAA Access**  
[Application Flags](#) | [EFC Values](#) | [Financial Aid Flags](#) | [Match Flags](#) | [Comment Codes](#)

### EFC Values

Month	Primary EFC	Secondary EFC
1	99999	99999
2	99999	99999
3	99999	99999
4	99999	99999
5	99999	99999
6	99999	99999
7	99999	99999
8	99999	99999
9	99999	99999
10	99999	99999
11	99999	99999
12	99999	99999

**Help**

[Customer Service](#) | [Frequently Asked Questions](#)



Entering a FAFSA Online - U.S. Department of Education - FAFSA on the Web - Netscape

File Edit View Go Communicator Help

2001-2002 **FAA ACCESS ON THE WEB**

Transactions Computed Info You the Student Income/ Assets Parent Info School Info NSLDS SAR Comments Reject Reasons **FAA Access**

[Application Flags](#) | [EFC Values](#) | [Financial Aid Flags](#) | [Match Flags](#) | [Comment Codes](#)

## Match Flags

SSN Match Flag:	4	Selective Service Registration Flag:	X	Selective Service Match:	X
INS Match Flag:	X	INS Verification #:	X	SSA Citizenship Code:	X
INS Sec. Conf. Flag:	X	NSLDS Results Flag:	1	NSLDS Transaction Number:	01
NSLDS Match Flag:	2	VA Match Flag:	1	PRIS Match Flag:	X

[Help](#)

[Customer Service](#) | [Frequently Asked Questions](#)

Document: Done

Entering a FAFSA Online - U.S. Department of Education - FAFSA on the Web - Netscape

File Edit View Go Communicator Help

2001-2002 **FAA ACCESS ON THE WEB**

Transactions Computed Info You the Student Income/ Assets Parent Info School Info NSLDS SAR Comments Reject Reasons **FAA Access**

[Application Flags](#) | [EFC Values](#) | [Financial Aid Flags](#) | [Match Flags](#) | [Comment Codes](#)

## Comment Codes

001	002	003	004	005
006	007	008	009	010
011	012	013	014	015
016	017	018	019	020

[Help](#)

[Customer Service](#) | [Frequently Asked Questions](#)

Document: Done

## ***What about the PIN?***

- The PIN serves as an electronic signature
- Used for user authentication to gain access to:
  - Renewal FOTW
  - Corrections on the Web
  - App. Status Check / Student Access Online
  - Duplicate SAR Request



***...more access!***

- The PIN also can be used to access:
  - NSLDS
  - Direct Loan Servicing
  - Direct Loan Consolidation



# ***PIN Enhancements***

- Change the PIN
  - user defined
  - system generated
- PIN information and status check
- PIN mailing address change
  - with PIN, or
  - with a signature page







## ***New PIN Mailer Look***

- 'Tear-out' card
- Customized text
  - based on the reason the PIN was generated

Here is your U.S. Department of Education PIN. We are sending this to you as a result of the request you made from the PIN Registration web site.

You will be able to use this PIN to:

- Complete and electronically sign your Free Application for Federal Student Aid (FAFSA) or Renewal FAFSA.
- Check the status and results of your processed FAFSA.
- Make corrections to your FAFSA.
- View a history of the Federal student aid you received.
- Make address corrections to your Direct Loan account, calculate a repayment schedule, and get interactive counseling on deferment or forbearance for any Direct Loans you have.
- Track the processing status of your On-line Consolidation Loan application throughout the entire consolidation process from application receipt to booking with Direct Loan Servicing.

Here is your U.S. Department of Education PIN



U.S. Department of Education  
Student Financial Assistance

Name:

**VICKI L REBLING**

PIN  
**9768**

You must type your PIN exactly  
as it appears on this card.

U.S. Department of Education web sites where you  
can use this PIN:

- FAFSA, Renewal FAFSA, and  
FAFSA Corrections on the Web  
[www.fafsa.ed.gov](http://www.fafsa.ed.gov)
- National Student Loan Database System  
[www.nslds.ed.gov](http://www.nslds.ed.gov)
- Direct Loan Servicing web site  
[www.dlservicer.ed.gov](http://www.dlservicer.ed.gov)
- Direct Loan Consolidation web site  
[www.loanconsolidation.ed.gov](http://www.loanconsolidation.ed.gov)

## *Is that all?*

- Conversion from C++ CGI to Java Servlets
  - Serves up one page at a time
  - Reduces server overhead
  - Reduces scrolling for the student
  - Provides easier navigation, including skip logic
- Increased bandwidth
- Larger server capacity

## *...are we done yet?*

- Never
- Every year the FOTW site is enhanced, updated, and expanded because of comments collected from you, your students, and their parents
- Keep them coming...





## ***Further Assistance***

We appreciate your feedback and comments. We can be reached:

FAFSA on the Web Customer Service

Phone: 1-800-801-0576

Email: [fafsaweb@ncs.com](mailto:fafsaweb@ncs.com)





Electronic Access Conference  
2000 GET CONNECTED

# *Questions?*



We Help Put America  
Through School